

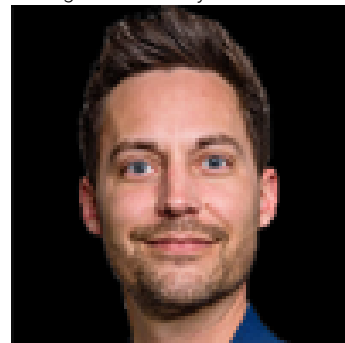


Edmonton Alberta

\$0

Fully built-out veterinary clinic located on Ellerslie Road, a high-exposure corridor in a rapidly developing area. The property benefits from strong surrounding demographics with over 28,000 residents within a 3 km radius. Excellent visibility with approximately 24,900 vehicles per day (2018 traffic count). Convenient access to Anthony Henday Drive and Highway 2 (QE2). Positioned among national tenants including 7-Eleven, making this an ideal opportunity for veterinary, medical, or professional users. (id:6769)

Listing Presented By:



Originally Listed by:
RE/MAX Real Estate

<https://gurmeetsandhu.ca/>

RE/MAX ELITE

RE/MAX Elite Sherwood Park

#116, 150 Chippewa Rd ,
Edmonton, Alberta,

Phone: 780-984-9399

Fax:

steveleddy@hotmail.com

The property information on this website is derived from the Canadian Real Estate Association's Data Distribution Facility (DDF®). DDF® references real estate listings held by various brokerage firms and franchisees. The accuracy of information is not guaranteed and should be independently verified. The trademarks REALTOR®, REALTORS® and the REALTOR® logo are controlled by The Canadian Real Estate Association (CREA) and identify real estate professionals who are members of CREA. The trademarks MLS®, Multiple Listing Service® and the associated logos are owned by CREA and identify the quality of services provided by real estate professionals who are members of CREA.