



Edmonton Alberta

\$249,900

Located in the desirable Canon Ridge community, this townhouse features fresh paint throughout, brand new vinyl plank flooring on the main and upper levels, new kitchen countertops, and a newly reinsulated single attached garage. The open concept main floor offers a bright living room, a spacious kitchen, and a comfortable dining area. Upstairs you'll find three good-sized bedrooms and a full bath. The basement is unfinished and ready for future development. Conveniently located near river valley trails, shopping, transit, and with quick access to Yellowhead and Anthony Henday. (id:6769)

Living room 5.2 m X 2.9 m

Dining room 2.3 m X 1.6 m

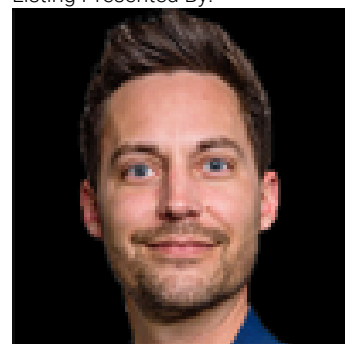
Kitchen 2.6 m X 2.4 m

Primary Bedroom 4.2 m X 3.3 m

Bedroom 2 3.8 m X 2.6 m

Bedroom 3 3 m X 2.6 m

Listing Presented By:



Originally Listed by:
Initia Real Estate

<http://csmanagement.ca/>

RE/MAX ELITE

RE/MAX Elite Sherwood Park

#116, 150 Chippewa Rd ,
Edmonton, Alberta,

Phone: 780-984-9399

Fax:

steveleddy@hotmail.com

The property information on this website is derived from the Canadian Real Estate Association's Data Distribution Facility (DDF®). DDF® references real estate listings held by various brokerage firms and franchisees. The accuracy of information is not guaranteed and should be independently verified. The trademarks REALTOR®, REALTORS® and the REALTOR® logo are controlled by The Canadian Real Estate Association (CREA) and identify real estate professionals who are members of CREA. The trademarks MLS®, Multiple Listing Service® and the associated logos are owned by CREA and identify the quality of services provided by real estate professionals who are members of CREA.