



## Rural Parkland County Alberta

\$419,000

This home offers Year round living at Seba beach on Wabamun lake. Great peaceful location on a no through road. Situated on a generous south facing 0.35 acre lot that receives all day sun from the wrap around deck with views of the lake that are unmatched. This 2009 built home boasts two bdrms & 1 bath including an oversized primary bedroom. Enjoy the great room feel of the kitchen, dining and living room, finishing the space off is a gas fireplace for those cozy evenings indoors! The home also has central A/C The BIG yard offers privacy, room for your visitor's with included RV and a garden shed. Seba Beach is minutes away whether walking or driving. A great little town that offers golfing for all levels, fishing, store and easy access to the HWY. Welcome home to Seba Beach. (id:6769)

Living room 13' x 20'

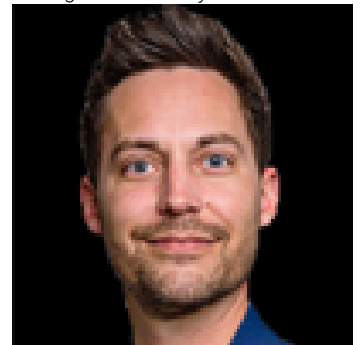
Dining room 10' x 20'

Kitchen 12' x 16'5"

Primary Bedroom 20' x 11'

Bedroom 2 12' x 9'

Listing Presented By:



Originally Listed by:  
Royal LePage Arteam Realty

**RE/MAX ELITE**

**RE/MAX Elite Sherwood Park**

#116, 150 Chippewa Rd ,  
Edmonton, Alberta,

Phone: 780-984-9399

Fax:

steveleddy@hotmail.com

The property information on this website is derived from the Canadian Real Estate Association's Data Distribution Facility (DDF®). DDF® references real estate listings held by various brokerage firms and franchisees. The accuracy of information is not guaranteed and should be independently verified. The trademarks REALTOR®, REALTORS® and the REALTOR® logo are controlled by The Canadian Real Estate Association (CREA) and identify real estate professionals who are members of CREA. The trademarks MLS®, Multiple Listing Service® and the associated logos are owned by CREA and identify the quality of services provided by real estate professionals who are members of CREA.