



Leduc Alberta

\$395,000

Corinthia Park Bungalow - 1,217 sq. ft. main floor plus a fully finished basement. This well-kept home offers 3 bedrooms, 2.5 bathrooms, and a double detached 24'x26' garage. Ideally located down the street from an elementary school. There has been many upgrades over the years from vinyl windows to added 2 exterior wall Styrofoam insulation and vinyl siding. The main floor features a grand living room with vaulted ceilings and fireplace. A spacious kitchen with all appliances included, a primary bedroom with a half-bath ensuite, two additional bedrooms, and a full 4-piece bathroom. The fully finished basement includes a large family room, a flex/bedroom, and a second full 3-piece bathroom. Mech/laundry room comes equipped with a washer, dryer and builtin vacuum system. Situated on a large lot with ample space for RV & vehicle parking. (id:6769)

Family room 7.75 m X 7.9 m

Bedroom 4 3.7 m X 3.65 m

Laundry room 2.79 m X 3.67 m

Living room 3.64 m X 5.89 m

Dining room 2.45 m X 2.73 m

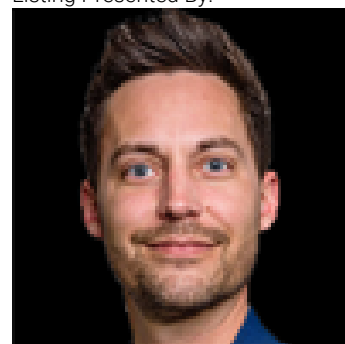
Kitchen 4.54 m X 3.03 m

Primary Bedroom 3.1 m X 4.03 m

Bedroom 2 3.49 m X 2.42 m

Bedroom 3 3.49 m X 3.46 m

Listing Presented By:



Originally Listed by:
RE/MAX Real Estate

<https://jimdulc.remaxhomesforsaleleduc.com/>

RE/MAX ELITE

RE/MAX Elite Sherwood Park

#116, 150 Chippewa Rd ,
Edmonton, Alberta,

Phone: 780-984-9399

Fax:

steveleddy@hotmail.com

The property information on this website is derived from the Canadian Real Estate Association's Data Distribution Facility (DDF®). DDF® references real estate listings held by various brokerage firms and franchisees. The accuracy of information is not guaranteed and should be independently verified. The trademarks REALTOR®, REALTORS® and the REALTOR® logo are controlled by The Canadian Real Estate Association (CREA) and identify real estate professionals who are members of CREA. The trademarks MLS®, Multiple Listing Service® and the associated logos are owned by CREA and identify the quality of services provided by real estate professionals who are members of CREA.