



## Beaumont Alberta

\$629,999

Welcome to this stunning 2-year-old home in Beaumont, offering 6 bedrooms—perfect for growing families! The upper level features 4 spacious bedrooms, including a beautiful primary suite with a 4-piece ensuite, along with another full 4-piece bathroom. The main floor is designed for both comfort and style, featuring a bright and open living area, a modern kitchen with stainless steel appliances, and a convenient 2-piece powder room—ideal for everyday living and entertaining. The fully finished basement adds 2 additional bedrooms 2nd kitchen separate laundry, giving you plenty of space for family and guests. Located in one of Beaumont's most sought-after communities, close to schools, parks, and all amenities, this home combines space, functionality, and modern living—an opportunity you don't want to miss! (id:6769)

Bedroom 5 Measurements not available

Bedroom 6 Measurements not available

Living room 4.11 m X 4.97 m

Dining room 3.33 m X 3.25 m

Kitchen 3.35 m X 3.86 m

Primary Bedroom 4.55 m X 4.42 m

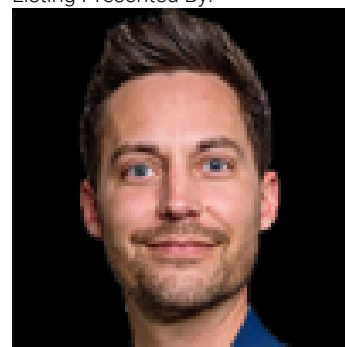
Bedroom 2 3.24 m X 3.94 m

Bedroom 3 4.26 m X 4.72 m

Bedroom 4 3.09 m X 3.94 m

Laundry room 3.12 m X 1.57 m

Listing Presented By:



Originally Listed by:  
smartPRO Realty

**RE/MAX ELITE**

**RE/MAX Elite Sherwood Park**

#116, 150 Chippewa Rd ,  
Edmonton, Alberta,

Phone: 780-984-9399

Fax:

steveleddy@hotmail.com

The property information on this website is derived from the Canadian Real Estate Association's Data Distribution Facility (DDF®). DDF® references real estate listings held by various brokerage firms and franchisees. The accuracy of information is not guaranteed and should be independently verified. The trademarks REALTOR®, REALTORS® and the REALTOR® logo are controlled by The Canadian Real Estate Association (CREA) and identify real estate professionals who are members of CREA. The trademarks MLS®, Multiple Listing Service® and the associated logos are owned by CREA and identify the quality of services provided by real estate professionals who are members of CREA.