



Sherwood Park Alberta

\$359,900

Welcome to this stunning dual master, 4-bath townhome in Palisades Estates! Over 1,800 sq ft of stylish living space with a cozy fireplace and large deck for entertaining. The open kitchen features granite countertops, stainless steel appliances, and a wine cooler, flowing into the living, dining, and dinette areas. Upstairs, the primary suite offers his-and-her closets and a tiled ensuite, while the second master boasts a gorgeous walk-in closet and 4-piece ensuite. Second-floor laundry included! The finished basement adds a spacious family room and 2-piece bath. Central A/C, custom blinds, and a finished attached garage complete the package. Walking paths at your door, close to Centennial Park, Millennium Place, and Emerald Hills, with easy access to Yellowhead, Anthony Henday, and Hwy 21! Some photos virtually staged. (id:6769)

Family room 5.92 m X 4.18 m

Living room 3.98 m X 3.49 m

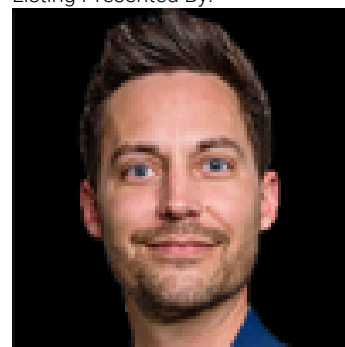
Dining room 3.94 m X 2.6 m

Kitchen 4 m X 4.39 m

Primary Bedroom 3.32 m X 3.39 m

Bedroom 2 3.74 m X 4.07 m

Listing Presented By:



Originally Listed by:
Exp Realty

<https://www.simplyrealestate.ca/>

RE/MAX ELITE

RE/MAX Elite Sherwood Park

#116, 150 Chippewa Rd,
Edmonton, Alberta,

Phone: 780-984-9399

Fax:

steveleddy@hotmail.com

The property information on this website is derived from the Canadian Real Estate Association's Data Distribution Facility (DDF®). DDF® references real estate listings held by various brokerage firms and franchisees. The accuracy of information is not guaranteed and should be independently verified. The trademarks REALTOR®, REALTORS® and the REALTOR® logo are controlled by The Canadian Real Estate Association (CREA) and identify real estate professionals who are members of CREA. The trademarks MLS®, Multiple Listing Service® and the associated logos are owned by CREA and identify the quality of services provided by real estate professionals who are members of CREA.