

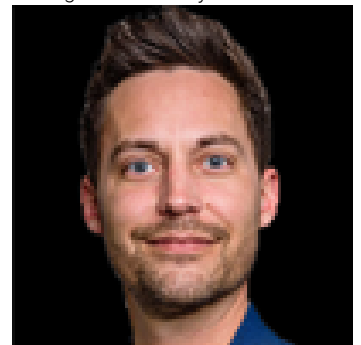


702 Blais Crescent Rural Lac La Biche County Alberta

\$60,000

All this for ONLY \$60,000! GOLDEN SANDS SUBDIVISION- This beautifully cleared 0.85-acre lot near stunning Lac La Biche Lake is ready for camping season, weekend escapes, or your future development plans. Located in a prime recreational area, you'll enjoy close proximity to boat launches and lake access for fishing, swimming, water skiing, or simply relaxing with family and friends while enjoying lake life. Nearby playgrounds and outdoor ice rinks add to the family-friendly appeal, while Lac La Biche is only a short drive away for shopping, schools, hospital services, and everyday amenities. Conveniently located approximately 2.5 hours from Fort McMurray and 2 hours from Edmonton, this affordable property offers the perfect getaway opportunity without breaking the bank. Motivated sellers are ready to make a deal -- and at this price, buyers better move QUICK because opportunities like this don't last long! (id:6769)

Listing Presented By:



Originally Listed by:
RE/MAX Connect

<http://www.kimshearsbailey.ca/>



RE/MAX Elite Sherwood Park

#116, 150 Chippewa Rd ,
Edmonton, Alberta,

Phone: 780-984-9399

Fax:

steveleddy@hotmail.com

The property information on this website is derived from the Canadian Real Estate Association's Data Distribution Facility (DDF®). DDF® references real estate listings held by various brokerage firms and franchisees. The accuracy of information is not guaranteed and should be independently verified. The trademarks REALTOR®, REALTORS® and the REALTOR® logo are controlled by The Canadian Real Estate Association (CREA) and identify real estate professionals who are members of CREA. The trademarks MLS®, Multiple Listing Service® and the associated logos are owned by CREA and identify the quality of services provided by real estate professionals who are members of CREA.