



Edmonton Alberta

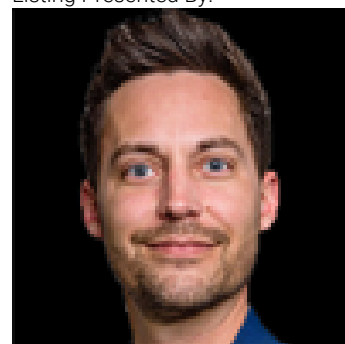
\$610,000

OPEN TO BELOW! Welcome to this fully upgraded home in Crystallina Nera, offering 3 bedrooms and 2.5 bathrooms with a functional, family-friendly layout. The main floor features a welcoming foyer, den, half bath, and a mudroom with direct access to the double attached garage. The kitchen showcases sleek cabinetry, quartz countertops, and a walk-in pantry, flowing seamlessly into the great room highlighted by an OPEN TO BELOW design and electric fireplace. The upper level offers a spacious bonus room, convenient upper-floor laundry, a full bathroom, and 3 well sized bedrooms. The primary retreat includes a walk in closet and 5-piece ensuite with double vanity, soaker tub, and tiled stand-up shower. Additional features include a rear deck and an unfinished basement, ready for future development. Located close to schools, parks, walking trails, and everyday amenities. (id:6769)

Living room Measurements not available
Dining room Measurements not available
Kitchen Measurements not available
Den Measurements not available
Pantry Measurements not available
Mud room Measurements not available

Primary Bedroom Measurements not available
Bedroom 2 Measurements not available
Bedroom 3 Measurements not available
Bonus Room Measurements not available
Laundry room Measurements not available

Listing Presented By:



Originally Listed by:
RE/MAX Excellence



RE/MAX Elite Sherwood Park

#116, 150 Chippewa Rd ,
Edmonton, Alberta,

Phone: 780-984-9399
Fax:
steveleddy@hotmail.com

The property information on this website is derived from the Canadian Real Estate Association's Data Distribution Facility (DDF®). DDF® references real estate listings held by various brokerage firms and franchisees. The accuracy of information is not guaranteed and should be independently verified. The trademarks REALTOR®, REALTORS® and the REALTOR® logo are controlled by The Canadian Real Estate Association (CREA) and identify real estate professionals who are members of CREA. The trademarks MLS®, Multiple Listing Service® and the associated logos are owned by CREA and identify the quality of services provided by real estate professionals who are members of CREA.