



## Sherwood Park Alberta

\$524,900

Beautiful 2 Storey Half-Duplex with a lovely Walkout Basement, Dbl Garage on a quiet street in the highly desirable neighbourhood of Aspen Trails! An open concept Main Floor offers a Living Room with F/P, Kitchen, Dining Room and a 1/2 Bath. The Kitchen has Quartz countertops, Island seating, SS Appliances and a Walk-in Pantry. Off the Dining Room is an oversized Deck overlooking the Landscaped/Fenced backyard with a concrete Patio. Upgraded railings lead to the upper Den/Loft, for multi-use and the convenience of an upstairs front-load Laundry. The Upper floor has Two Masters Suites, each with an Ensuite and large Walk-in Closet, providing ample storage. The lower level is a Walkout to the backyard with a Family Room, a 4-piece Bath and Utility Room. A beautiful Playground and several Walking Trails are in close proximity to Enjoy! Won't last!

(id:6769)

Family room 5.87 m X 5.48 m

Utility room 3.18 m X 2.8 m

Living room 3.14 m X 4 m

Dining room 2.99 m X 2.64 m

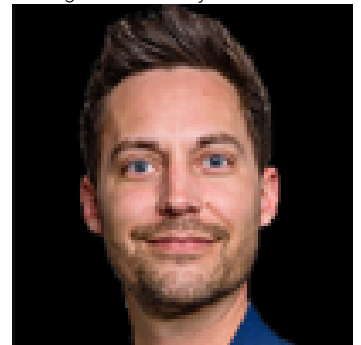
Kitchen 4.26 m X 3.8 m

Den 3.67 m X 4.89 m

Primary Bedroom 3.75 m X 4.95 m

Bedroom 2 4.51 m X 4.05 m

Listing Presented By:



Originally Listed by:  
NOW Real Estate Group

**RE/MAX ELITE**

**RE/MAX Elite Sherwood Park**

#116, 150 Chippewa Rd ,  
Edmonton, Alberta,

Phone: 780-984-9399

Fax:

steveleddy@hotmail.com

The property information on this website is derived from the Canadian Real Estate Association's Data Distribution Facility (DDF®). DDF® references real estate listings held by various brokerage firms and franchisees. The accuracy of information is not guaranteed and should be independently verified. The trademarks REALTOR®, REALTORS® and the REALTOR® logo are controlled by The Canadian Real Estate Association (CREA) and identify real estate professionals who are members of CREA. The trademarks MLS®, Multiple Listing Service® and the associated logos are owned by CREA and identify the quality of services provided by real estate professionals who are members of CREA.