



Edmonton Alberta

\$415,000

Immaculate READY TO MOVE-IN home in\ pristine Summerside community! This amazing 3 bedroom, 2.5 bathroom end unit half-duplex features upgraded custom cabinets, stainless steel appliances, and a fantastic open concept main floor plan. Upstairs boasts 3 gorgeous bedrooms with ample closet space, a 4 piece bathroom, including a large master bedroom with a 3 piece ensuite and walk-in closet. Newer furnace, newer refrigerator, microwave and washer. Brand new dish washer just installed. The main floor is recently renovated with newer quartz countertop, all 3 toilets recently replaced and newer carpet. You can park 4 cars which is inside the garage and in long driveway. The basement awaits your finishing touches. Enjoy fishing, skating, boating, swimming, basketball, tennis, BBQ's and all the amenities Lake Summerside has to offer. A perfect home for beginners and a small family. (id:6769)

Living room Measurements not available

Dining room Measurements not available

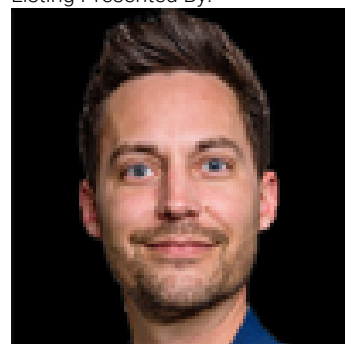
Kitchen Measurements not available

Primary Bedroom Measurements not available

Bedroom 2 Measurements not available

Bedroom 3 Measurements not available

Listing Presented By:



Originally Listed by:
Exp Realty



RE/MAX Elite Sherwood Park

#116, 150 Chippewa Rd ,
Edmonton, Alberta,

Phone: 780-984-9399

Fax:

steveleddy@hotmail.com

The property information on this website is derived from the Canadian Real Estate Association's Data Distribution Facility (DDF®). DDF® references real estate listings held by various brokerage firms and franchisees. The accuracy of information is not guaranteed and should be independently verified. The trademarks REALTOR®, REALTORS® and the REALTOR® logo are controlled by The Canadian Real Estate Association (CREA) and identify real estate professionals who are members of CREA. The trademarks MLS®, Multiple Listing Service® and the associated logos are owned by CREA and identify the quality of services provided by real estate professionals who are members of CREA.