



Edmonton Alberta

\$399,999

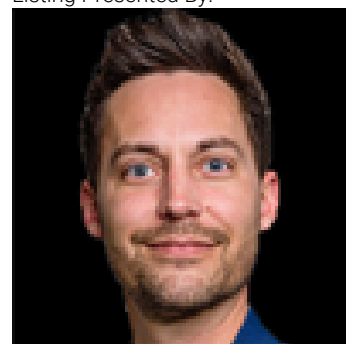
This stylish, newly renovated half-duplex features BRAND NEW CARPET WITH EXTRA THICK UNDERLAY THAT IS PET/STAIN RESISTANT, durable and stylish VINYL FLOORING, and QUARTZ COUNTERTOPS. The open-concept design is enhanced by modern MDF WALL FEATURES, designer WALLPAPER, and an elegant ELECTRIC FIREPLACE. The kitchen boasts STAINLESS STEEL APPLIANCES, while the INCLUDED WINDOW COVERINGS add convenience and comfort. Step outside to a spacious 12' x 20' SOUTH-FACING DECK perfect for soaking up the sun or entertaining with your NATURAL GAS BBQ HOOKUP. Enjoy ample parking with the REAR PARKIN PAD and plenty of street parking for family and guests. With lake and amenity access, you'll love the lifestyle this home offers all while being close to schools, shopping and easy access to the Anthony Henday. Don't miss this great opportunity to be a part of the Lake Summerside Community! (id:6769)

Primary Bedroom Measurements not available

Bedroom 3 Measurements not available

Bedroom 2 Measurements not available

Listing Presented By:



Originally Listed by:
Royal LePage Prestige Realty



RE/MAX Elite Sherwood Park

#116, 150 Chippewa Rd ,
Edmonton, Alberta,

Phone: 780-984-9399

Fax:

steveleddy@hotmail.com

The property information on this website is derived from the Canadian Real Estate Association's Data Distribution Facility (DDF®). DDF® references real estate listings held by various brokerage firms and franchisees. The accuracy of information is not guaranteed and should be independently verified. The trademarks REALTOR®, REALTORS® and the REALTOR® logo are controlled by The Canadian Real Estate Association (CREA) and identify real estate professionals who are members of CREA. The trademarks MLS®, Multiple Listing Service® and the associated logos are owned by CREA and identify the quality of services provided by real estate professionals who are members of CREA.