



Sherwood Park Alberta

\$485,000

Welcome to Christina Court, where carefree living meets comfort & convenience! Low-maintenance living with a low \$125/month HOA fee that includes lawn care & snow removal. This beautifully maintained half-duplex bungalow offers an inviting open-concept layout with vaulted ceilings & 2 solar tubes that flood the home with natural light. The spacious kitchen features abundant cabinetry, NEW appliances & overlooks the dining & living room anchored by a cozy gas fireplace. New laminate flooring & A/C add style & comfort throughout. The king sized primary suite offers a walk-in closet & 4pc ensuite, while a 2nd bedroom, main floor laundry & additional full bath complete the functional layout. The basement is partly finished, framed & drywalled for a family room, bedroom, den & 2pc. With a separate side entrance & plumbing for a 2nd laundry set there's endless potential. Outside, enjoy a beautifully landscaped yard filled with patio. Insulated double garage, no age restrictions & move-in ready! (id:6769)

Family room Measurements not available

Living room Measurements not available

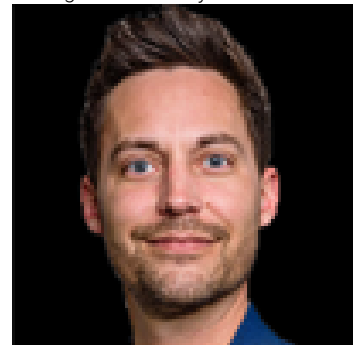
Dining room Measurements not available

Kitchen Measurements not available

Primary Bedroom Measurements not available

Bedroom 2 Measurements not available

Listing Presented By:



Originally Listed by:
RE/MAX Excellence

<http://www.hodgesandmohr.com/>



RE/MAX Elite Sherwood Park

#116, 150 Chippewa Rd ,
Edmonton, Alberta,

Phone: 780-984-9399

Fax:

steveleddy@hotmail.com

The property information on this website is derived from the Canadian Real Estate Association's Data Distribution Facility (DDF®). DDF® references real estate listings held by various brokerage firms and franchisees. The accuracy of information is not guaranteed and should be independently verified. The trademarks REALTOR®, REALTORS® and the REALTOR® logo are controlled by The Canadian Real Estate Association (CREA) and identify real estate professionals who are members of CREA. The trademarks MLS®, Multiple Listing Service® and the associated logos are owned by CREA and identify the quality of services provided by real estate professionals who are members of CREA.