



## Edmonton Alberta

\$449,900

AVAILABLE FOR A TENTATIVE SUMMER POSSESSION. Welcome to the stylish Metro Aspire 18 by Cantiro Homes. This rear-lane home with a parking pad is thoughtfully designed for modern living, featuring an open-concept main floor with a bright living room, dining area, central kitchen with island, pantry, rear mudroom, and convenient half bath. A separate side entry offers added flexibility and future development potential. Upstairs, enjoy a spacious primary bedroom with a walk-in closet and private ensuite, plus two additional bedrooms, a full bath, and laundry. Additional highlights include a 9'3" foundation wall height, Prairie Fusion Plus exterior styling, linen colour board package, and landscaping. Located in Riverstead at Keswick, you'll enjoy access to parks, trails, green spaces, shopping, amenities, and convenient connections throughout Southwest Edmonton. Photos are representative; features may vary. (id:6769)

Living room 3.94 m X 3.63 m

Dining room 2.59 m X 3.12 m

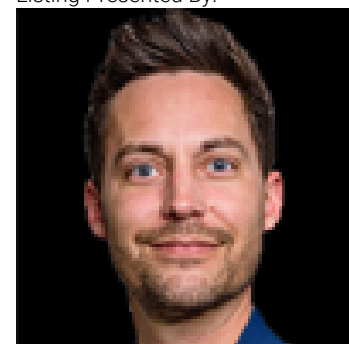
Kitchen 2.59 m X 3.23 m

Primary Bedroom 3.35 m X 3.63 m

Bedroom 2 2.48 m X 2.9 m

Bedroom 3 2.59 m X 2.79 m

Listing Presented By:



Originally Listed by:  
Bode

**RE/MAX ELITE**

**RE/MAX Elite Sherwood Park**

#116, 150 Chippewa Rd ,  
Edmonton, Alberta,

Phone: 780-984-9399

Fax:

steveleddy@hotmail.com

The property information on this website is derived from the Canadian Real Estate Association's Data Distribution Facility (DDF®). DDF® references real estate listings held by various brokerage firms and franchisees. The accuracy of information is not guaranteed and should be independently verified. The trademarks REALTOR®, REALTORS® and the REALTOR® logo are controlled by The Canadian Real Estate Association (CREA) and identify real estate professionals who are members of CREA. The trademarks MLS®, Multiple Listing Service® and the associated logos are owned by CREA and identify the quality of services provided by real estate professionals who are members of CREA.