



Sherwood Park Alberta

\$689,900

Welcome to this stunning 2-storey, 4-bedroom, 2.5-bath home in Emerald Hills. Freshly updated with limewash paint and brand-new carpet throughout, this home is completely move-in ready. The updated kitchen features stainless steel appliances, a butler's walk-in pantry, and a large quartz island. The open-concept main floor offers high ceilings, abundant natural light, a spacious living room with glass fireplace, and a dining area. Upstairs features a large family room, a primary bedroom with walk-in closet and 5-piece ensuite with dual vanities and two-sided fireplace. Two additional bedrooms and a 4-piece bath complete the upper level. Additional highlights include plenty of storage, a low-maintenance vinyl fenced backyard with hot tub, and a double attached garage. A must-see! (id:6769)

Bedroom 4 Measurements not available

Living room 13' x 16'6"

Dining room 12'4" x 13'

Kitchen Measurements not available x 11 m

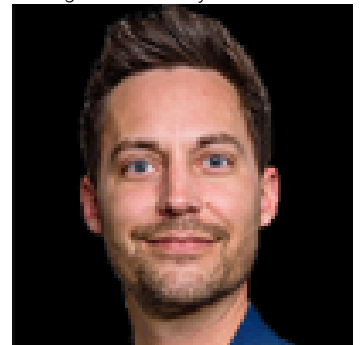
Primary Bedroom 13'10" x 15'7"

Bedroom 2 12'8" x 9'11"

Bedroom 3 10'4" x 9'11"

Bonus Room Measurements not available x 14 m

Listing Presented By:



Originally Listed by:
RE/MAX Elite



RE/MAX Elite Sherwood Park

#116, 150 Chippewa Rd ,
Edmonton, Alberta,

Phone: 780-984-9399

Fax:

steveleddy@hotmail.com

The property information on this website is derived from the Canadian Real Estate Association's Data Distribution Facility (DDF®). DDF® references real estate listings held by various brokerage firms and franchisees. The accuracy of information is not guaranteed and should be independently verified. The trademarks REALTOR®, REALTORS® and the REALTOR® logo are controlled by The Canadian Real Estate Association (CREA) and identify real estate professionals who are members of CREA. The trademarks MLS®, Multiple Listing Service® and the associated logos are owned by CREA and identify the quality of services provided by real estate professionals who are members of CREA.