



# Leduc Alberta

\$499,900

Welcome to Strawberry Lane! Fronting onto greenspace, this beautifully upgraded 5-bedroom, 3.5-bath home is set in a family-friendly community with a playground nearby. The main floor features a bright, open kitchen, dining, and living area with modern finishes and designer flair throughout. Stay cool all summer with central A/C. The finished basement offers a separate rear entrance, complete with two bedrooms, bathroom, living area, separate laundry--great for guests, extended family, or added flexibility. Outside, the low-maintenance yard is ideal for busy families, and the heated detached double garage keeps vehicles warm all winter. This home shows 10/10 and delivers comfort, style, and smart design inside and out! (id:6769)

Bedroom 4 3.82 m X 2.47 m

Laundry room 1.69 m X 3.7 m

Other 1.85 m X 2.08 m

Bedroom 5 2.43 m X 4.19 m

Second Kitchen 2.84 m X 2.61 m

Living room 4.14 m X 4.34 m

Dining room 3.28 m X 2.51 m

Kitchen 2.97 m X 3.26 m

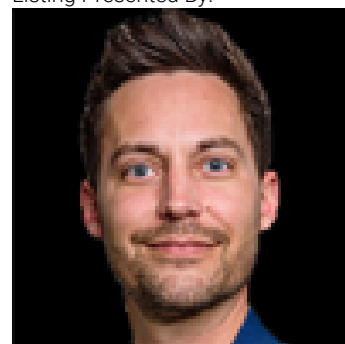
Laundry room 1.73 m X 1.68 m

Primary Bedroom 3.43 m X 3.99 m

Bedroom 2 3.13 m X 3.03 m

Bedroom 3 2.94 m X 3.86 m

Listing Presented By:



Originally Listed by:  
CIR Realty

<http://www.art-homes.ca/>

**RE/MAX ELITE**

**RE/MAX Elite Sherwood Park**

#116, 150 Chippewa Rd ,  
Edmonton, Alberta,

Phone: 780-984-9399

Fax:

steveleddy@hotmail.com

The property information on this website is derived from the Canadian Real Estate Association's Data Distribution Facility (DDF®). DDF® references real estate listings held by various brokerage firms and franchisees. The accuracy of information is not guaranteed and should be independently verified. The trademarks REALTOR®, REALTORS® and the REALTOR® logo are controlled by The Canadian Real Estate Association (CREA) and identify real estate professionals who are members of CREA. The trademarks MLS®, Multiple Listing Service® and the associated logos are owned by CREA and identify the quality of services provided by real estate professionals who are members of CREA.