

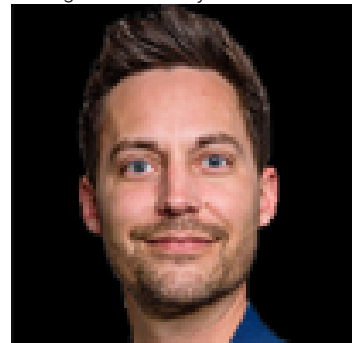


Edmonton Alberta

\$11

Awesome Location for professionals. Suitable for Lawyers, Accountants and Consultants. 7 Offices of various sizes 84 - 162 sq f. Fully furnished with desks, chairs and bookshelves. Newly renovated 2022 air conditioned building. Wheelchair accessible offices and washrooms. Generous use of any one of 3 meeting rooms including video conferencing, receptionist and waiting area. Common kitchen with top appliances. Plenty of parking immediately outside of the office. Security doors 7 minutes to downtown and 2 blocks away from main artery of 75th Street. (id:6769)

Listing Presented By:



Originally Listed by:
Century 21 Leading

<https://angela-kostiuk.c21.ca/>

RE/MAX ELITE

RE/MAX Elite Sherwood Park

#116, 150 Chippewa Rd ,
Edmonton, Alberta,

Phone: 780-984-9399

Fax:

steveleddy@hotmail.com

The property information on this website is derived from the Canadian Real Estate Association's Data Distribution Facility (DDF®). DDF® references real estate listings held by various brokerage firms and franchisees. The accuracy of information is not guaranteed and should be independently verified. The trademarks REALTOR®, REALTORS® and the REALTOR® logo are controlled by The Canadian Real Estate Association (CREA) and identify real estate professionals who are members of CREA. The trademarks MLS®, Multiple Listing Service® and the associated logos are owned by CREA and identify the quality of services provided by real estate professionals who are members of CREA.