



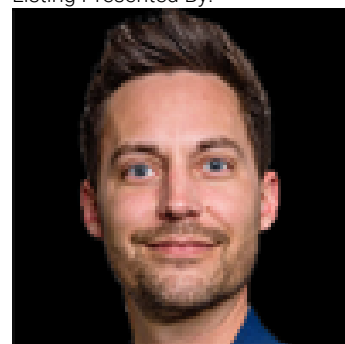
Edmonton Alberta

\$425,000

Great Redevelopment Property in Idylwyld! The property is located within walking distance to Bonnie Doon Mall, the LRT, Whyte Avenue, and great access to the University of Alberta. Home has not been lived in for numerous years. Property is Sold AS IS Where Is for Land Value Only. Great opportunity for building your dream home or multi family project. (id:6769)

Primary Bedroom Measurements not available

Listing Presented By:



Originally Listed by:
MaxWell Devonshire Realty



RE/MAX Elite Sherwood Park

#116, 150 Chippewa Rd ,
Edmonton, Alberta,

Phone: 780-984-9399

Fax:
steveleddy@hotmail.com

The property information on this website is derived from the Canadian Real Estate Association's Data Distribution Facility (DDF®). DDF® references real estate listings held by various brokerage firms and franchisees. The accuracy of information is not guaranteed and should be independently verified. The trademarks REALTOR®, REALTORS® and the REALTOR® logo are controlled by The Canadian Real Estate Association (CREA) and identify real estate professionals who are members of CREA. The trademarks MLS®, Multiple Listing Service® and the associated logos are owned by CREA and identify the quality of services provided by real estate professionals who are members of CREA.