



Edmonton Alberta

\$425,000

This home has seen so many major upgrades - a BRAND NEW 22x24 garage with 10 foot ceilings, new shingles, central AC, new windows + doors, and an updated kitchen. Walking in, you'll see the spacious living room and flex space. Next to that is the updated kitchen with new counters, stainless appliances, a corner pantry, and a centre island. There is also a half bath and access to the backyard on this level. Upstairs you'll find the primary suite, as well as 2 more bedrooms and a full bathroom. The basement is partly finished with a 4th bedroom, laundry, and storage. Located in a cul-de-sac near a park, this home is a MUST SEE ! (id:6769)

Bedroom 4 3.69 m X 3.72 m

Living room 3.87 m X 3.63 m

Dining room 2.63 m X 2.74 m

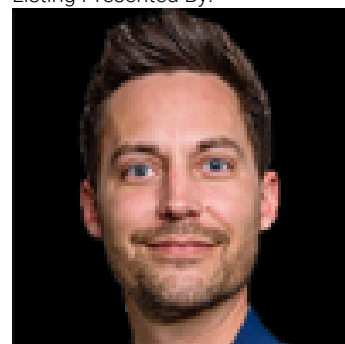
Kitchen 3.92 m X 2.6 m

Primary Bedroom 3.93 m X 3.86 m

Bedroom 2 3.28 m X 3.22 m

Bedroom 3 2.45 m X 3.6 m

Listing Presented By:



Originally Listed by:
2% Realty Pro

<http://www.deannesells.com/>

RE/MAX ELITE

RE/MAX Elite Sherwood Park

#116, 150 Chippewa Rd ,
Edmonton, Alberta,

Phone: 780-984-9399

Fax:

steveleddy@hotmail.com

The property information on this website is derived from the Canadian Real Estate Association's Data Distribution Facility (DDF®). DDF® references real estate listings held by various brokerage firms and franchisees. The accuracy of information is not guaranteed and should be independently verified. The trademarks REALTOR®, REALTORS® and the REALTOR® logo are controlled by The Canadian Real Estate Association (CREA) and identify real estate professionals who are members of CREA. The trademarks MLS®, Multiple Listing Service® and the associated logos are owned by CREA and identify the quality of services provided by real estate professionals who are members of CREA.