



Sherwood Park Alberta

\$499,900

Welcome to a home that has been deeply loved & thoughtfully cared for! Tucked away in a quiet cul-de-sac on an oversized pie-shaped lot, this property offers a rare combination of space, privacy & mature landscaping. Every corner reflects the pride of ownership and attention to detail. The functional layout boasts 3 beds + a den, 3.5 baths, a professionally developed basement & over 1546SQFT of living space. The expansive backyard is a rare find, featuring an extended deck with a BBQ gas line. The shape of the lot allows you to enjoy sunshine throughout the day, whether you're sipping your morning coffee or unwinding in the evening. Inside, you'll find a warm & stylish interior featuring quartz countertops throughout, designer light fixtures, custom window coverings & thoughtfully designed feature walls. Additional highlights include central AC & an insulated, painted double attached garage. Providing comfort and convenience year round, this is more than just a house-it's a home ready for its next chapter (id:6769)

Family room 6.79 m X 4.64 m

Den 2.37 m X 2.85 m

Utility room 2.67 m X 2.85 m

Living room 4.32 m X 3.71 m

Dining room 2.73 m X 2.78 m

Kitchen 4.85 m X 2.92 m

Primary Bedroom 3.77 m X 4.78 m

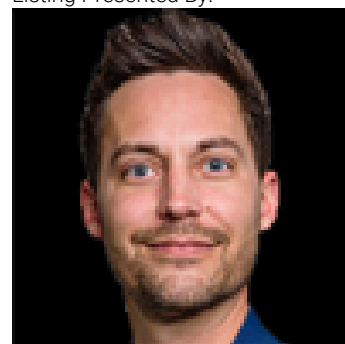
Bedroom 2 3.76 m X 3.25 m

Bedroom 3 3.16 m X 3.25 m

Bonus Room 3.17 m X 2.9 m

Laundry room 2.12 m X 2 m

Listing Presented By:



Originally Listed by:
RE/MAX Elite

<https://www.realestatewithjay.com/>

RE/MAX ELITE

RE/MAX Elite Sherwood Park

#116, 150 Chippewa Rd ,
Edmonton, Alberta,

Phone: 780-984-9399

Fax:

steveddy@hotmail.com

The property information on this website is derived from the Canadian Real Estate Association's Data Distribution Facility (DDF®). DDF® references real estate listings held by various brokerage firms and franchisees. The accuracy of information is not guaranteed and should be independently verified. The trademarks REALTOR®, REALTORS® and the REALTOR® logo are controlled by The Canadian Real Estate Association (CREA) and identify real estate professionals who are members of CREA. The trademarks MLS®, Multiple Listing Service® and the associated logos are owned by CREA and identify the quality of services provided by real estate professionals who are members of CREA.