



Edmonton Alberta

\$474,900

Sitting on a large lot on a quiet street in Kenilworth, this beautiful home has been carefully maintained by the same owner for over 50 years. Enjoy the sunset from the west-facing living room, and the sunrise from the window in the gorgeous oak kitchen. There are three bedrooms up and two down, and three bathrooms (including an ensuite). Pride of ownership shows, especially in the yard and gardens. The in-ground watering system was installed about 20 years ago; kitchen and basement were redone in the 1990's. More recent updates include new shingles and furnace within the past ten years; the HWT, washer, dryer, dishwasher and microwave are all less than three years old. A rubber surface driveway leads to the oversized single garage, and the installed roll shutters add peace of mind. The location is ideal, on a quiet street with quick access to downtown and major transportation routes. This wonderful family home is sure to impress! (id:6769)

Living room 13.4 m X 20.3 m

Dining room 8 m X 8.2 m

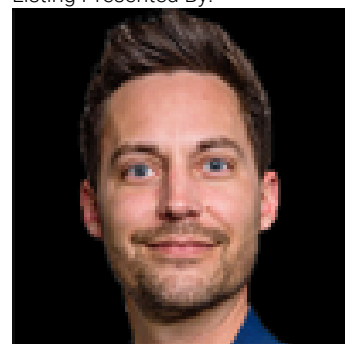
Kitchen 16.1 m X 10.3 m

Primary Bedroom 13.2 m X 10.1 m

Bedroom 2 10.2 m X 9.8 m

Bedroom 3 8.7 m X 9.8 m

Listing Presented By:



Originally Listed by:
RE/MAX Elite

<http://timwillson.com/>



RE/MAX Elite Sherwood Park

#116, 150 Chippewa Rd ,
Edmonton, Alberta,

Phone: 780-984-9399

Fax:

steveleddy@hotmail.com

The property information on this website is derived from the Canadian Real Estate Association's Data Distribution Facility (DDF®). DDF® references real estate listings held by various brokerage firms and franchisees. The accuracy of information is not guaranteed and should be independently verified. The trademarks REALTOR®, REALTORS® and the REALTOR® logo are controlled by The Canadian Real Estate Association (CREA) and identify real estate professionals who are members of CREA. The trademarks MLS®, Multiple Listing Service® and the associated logos are owned by CREA and identify the quality of services provided by real estate professionals who are members of CREA.