



Edmonton Alberta

\$559,000

Welcome to this beautiful bungalow on a tree-lined street offers great curb appeal and functional living space. The main floor features a bright living room with large windows, a spacious dining area, and a kitchen with ample cabinetry, stainless steel appliances, and a backyard view. A primary suite, two additional bedrooms, and an updated 4-piece bath complete the level. The fully finished basement has a separate entrance to a private in-law suite with two bedrooms, a full kitchen, large living room, and updated 3-piece bath—perfect for extended family or rental potential. Outside, enjoy a west-facing, fully fenced backyard with concrete patio, BBQ brick pad, and an oversized single garage with extra parking. (id:6769)

Bedroom 4 Measurements not available

Bedroom 5 Measurements not available

Second Kitchen Measurements not available

Recreation room Measurements not available

Living room Measurements not available

Dining room Measurements not available

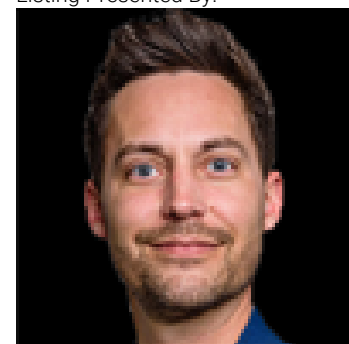
Kitchen Measurements not available

Primary Bedroom Measurements not available

Bedroom 2 Measurements not available

Bedroom 3 Measurements not available

Listing Presented By:



Originally Listed by:
Exp Realty



RE/MAX Elite Sherwood Park

#116, 150 Chippewa Rd ,
Edmonton, Alberta,

Phone: 780-984-9399

Fax:

steveleddy@hotmail.com

The property information on this website is derived from the Canadian Real Estate Association's Data Distribution Facility (DDF®). DDF® references real estate listings held by various brokerage firms and franchisees. The accuracy of information is not guaranteed and should be independently verified. The trademarks REALTOR®, REALTORS® and the REALTOR® logo are controlled by The Canadian Real Estate Association (CREA) and identify real estate professionals who are members of CREA. The trademarks MLS®, Multiple Listing Service® and the associated logos are owned by CREA and identify the quality of services provided by real estate professionals who are members of CREA.