

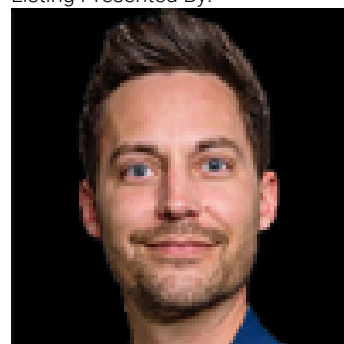


## Edmonton Alberta

\$900,000

Lot AND Home must be purchased together. This is your final opportunity to secure the last remaining 50-pocket walkout lot directly backing onto the stunning Lake Summerside--available exclusively for build-through with Five Star Homes. Imagine crafting your dream home in Edmonton's premier lake community, where residents enjoy exclusive access to private beaches, swimming, paddleboarding, kayaking, and year-round activities like ice skating in the winter. This prime walkout lot offers breathtaking lake views and provides direct access to all of Summerside's incredible amenities, including playgrounds, walking trails, tennis courts, and vibrant community events. With top-tier schools nearby and convenient access to major roads like Anthony Henday Drive, this lot is perfect for those seeking an active, family-friendly lifestyle in a resort-like environment. Don't miss out--this is your last chance to build your custom home directly on the lake! (id:6769)

Listing Presented By:



Originally Listed by:  
Century 21 Bravo Realty

<https://rickaujla.c21.ca/>

**RE/MAX ELITE**

**RE/MAX Elite Sherwood Park**

#116, 150 Chippewa Rd ,  
Edmonton, Alberta,

Phone: 780-984-9399

Fax:

steveleddy@hotmail.com

The property information on this website is derived from the Canadian Real Estate Association's Data Distribution Facility (DDF®). DDF® references real estate listings held by various brokerage firms and franchisees. The accuracy of information is not guaranteed and should be independently verified. The trademarks REALTOR®, REALTORS® and the REALTOR® logo are controlled by The Canadian Real Estate Association (CREA) and identify real estate professionals who are members of CREA. The trademarks MLS®, Multiple Listing Service® and the associated logos are owned by CREA and identify the quality of services provided by real estate professionals who are members of CREA.