



Sherwood Park Alberta

\$524,999

The kind of home families wait for but rarely find! Fully transformed and MOVE IN READY, this 5 BEDROOM, 4 BATHROOM home sits on a treed CORNER LOT in Maplegrove. Bright open living spaces were designed for real life with room to grow, gather, and entertain. The kitchen is the heart of the home with QUARTZ countertops, a beautiful island, and TONS OF STORAGE space. The large primary retreat features its own ENSUITE for a private escape at the end of the day. Downstairs offers a spacious FAMILY ROOM plus separate WET BAR area with IN-LAW SUITE POTENTIAL, perfect for movie nights, kids hangouts, or hosting friends. Outside, the MASSIVE yard is ready for summer BBQs, kids, pets, and play. The HEATED oversized garage with POWER, WATER, DRAIN, and 220V power is ideal for projects and storage. Major upgrades include FURNACE, ROOF, and NEW 100 AMP PANEL W/ COPPER ELECTRICAL. Walking distance to parks, schools, shopping, and amenities. WELCOME HOME! (id:6769)

Family room Measurements not available

Den Measurements not available

Bedroom 4 Measurements not available

Bedroom 5 Measurements not available

Living room Measurements not available

Dining room Measurements not available

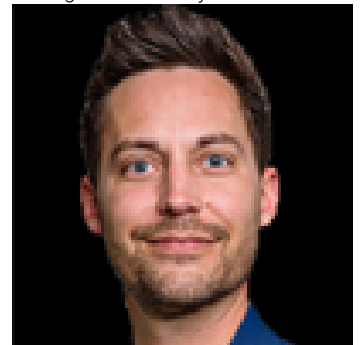
Kitchen Measurements not available

Primary Bedroom Measurements not available

Bedroom 2 Measurements not available

Bedroom 3 Measurements not available

Listing Presented By:



Originally Listed by:
Exp Realty

<https://www.aret.ca/Jack-Sommer>
t

RE/MAX ELITE

RE/MAX Elite Sherwood Park

#116, 150 Chippewa Rd ,
Edmonton, Alberta,

Phone: 780-984-9399

Fax:

steveleddy@hotmail.com

The property information on this website is derived from the Canadian Real Estate Association's Data Distribution Facility (DDF®). DDF® references real estate listings held by various brokerage firms and franchisees. The accuracy of information is not guaranteed and should be independently verified. The trademarks REALTOR®, REALTORS® and the REALTOR® logo are controlled by The Canadian Real Estate Association (CREA) and identify real estate professionals who are members of CREA. The trademarks MLS®, Multiple Listing Service® and the associated logos are owned by CREA and identify the quality of services provided by real estate professionals who are members of CREA.