



Edmonton Alberta

\$250,000

A rare chance to own a 1,100 sq ft townhouse backing onto green space, offering privacy and flexibility in the heart of Sakaw. The bright main floor features beautiful light vinyl plank flooring, a white kitchen with stainless steel appliances, and a spacious living room highlighted by a cozy wood-burning fireplace, creating a comfortable space for everyday living and entertaining. Upstairs offers three generously sized bedrooms with soft carpet flooring, while the partly finished basement adds valuable extra space with a fourth bedroom, rec area, laundry, and storage. Enjoy a private south-facing backyard with no neighbours behind, all just minutes from schools, parks, shopping, public transit, major routes, and nearby golf--making this an excellent opportunity for first-time buyers or investors. (id:6769)

Family room 3.21 m X 4.63 m

Bedroom 4 3.25 m X 2.95 m

Laundry room 3.43 m X 1.41 m

Utility room 4 m X 2.55 m

Living room 3.52 m X 4.01 m

Dining room 4.29 m X 2.81 m

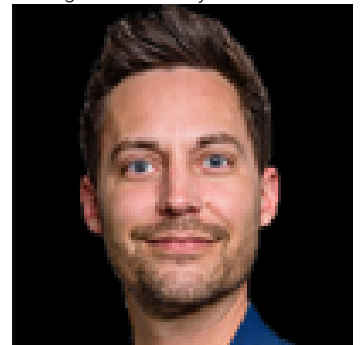
Kitchen 3.52 m X 3.06 m

Primary Bedroom 3.53 m X 3.32 m

Bedroom 2 3.53 m X 2.47 m

Bedroom 3 2.72 m X 4.04 m

Listing Presented By:



Originally Listed by:
Exp Realty

<http://john.muveteam.com/>

RE/MAX ELITE

RE/MAX Elite Sherwood Park

#116, 150 Chippewa Rd ,
Edmonton, Alberta,

Phone: 780-984-9399

Fax:

steveleddy@hotmail.com

The property information on this website is derived from the Canadian Real Estate Association's Data Distribution Facility (DDF®). DDF® references real estate listings held by various brokerage firms and franchisees. The accuracy of information is not guaranteed and should be independently verified. The trademarks REALTOR®, REALTORS® and the REALTOR® logo are controlled by The Canadian Real Estate Association (CREA) and identify real estate professionals who are members of CREA. The trademarks MLS®, Multiple Listing Service® and the associated logos are owned by CREA and identify the quality of services provided by real estate professionals who are members of CREA.