

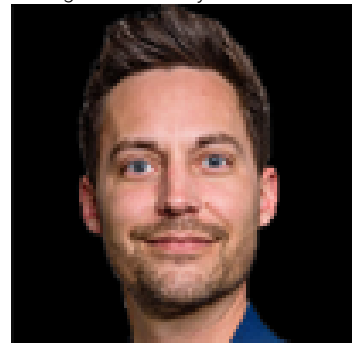


Rural Lac Ste Anne County Alberta

\$100,000

Discover the perfect balance of privacy, nature, and convenience on this exceptional 1.56-acre parcel in sought-after Sturgeon Heights. Backing onto a protected forest reserve, this property offers a peaceful, secluded setting surrounded by the beauty of the Sturgeon River valley. A cleared driveway and building site are already in place, making it easier to bring your dream home to life. Enjoy paved access and an easy commute to St. Albert, Edmonton, Spruce Grove, and Stony Plain, all within approximately 30 minutes. The property is rich with natural beauty, including wild strawberries and Saskatoon berries, while nearby Alberta Beach, Sandy Beach, farmers' markets, and local amenities provide endless opportunities to enjoy the Alberta lifestyle. Whether you're envisioning a custom bungalow, modern retreat, or family estate, this build-ready lot offers the space, privacy, and flexibility to create something truly special. (id:6769)

Listing Presented By:



Originally Listed by:
Liv Real Estate

RE/MAX ELITE

RE/MAX Elite Sherwood Park

#116, 150 Chippewa Rd ,
Edmonton, Alberta,

Phone: 780-984-9399

Fax:

steveleddy@hotmail.com

The property information on this website is derived from the Canadian Real Estate Association's Data Distribution Facility (DDF®). DDF® references real estate listings held by various brokerage firms and franchisees. The accuracy of information is not guaranteed and should be independently verified. The trademarks REALTOR®, REALTORS® and the REALTOR® logo are controlled by The Canadian Real Estate Association (CREA) and identify real estate professionals who are members of CREA. The trademarks MLS®, Multiple Listing Service® and the associated logos are owned by CREA and identify the quality of services provided by real estate professionals who are members of CREA.