



Sherwood Park Alberta

\$139,900

Affordable. Updated. Move-in ready. Welcome to 902 JUBILEE CLOSE! This 1200sq ft bright 3 BED, 2 BATH family home sits on a SPACIOUS CORNER LOT beside the creek in a quiet cul-de-sac--just steps to the entrance and walking distance to grocery stores, shops & restaurants. VAULTED CEILINGS, a kitchen SKYLIGHT, and SOUTH-FACING windows fill the home with natural light, while the open layout features a large kitchen with island + WET BAR overlooking the living room. VINYL PLANK flooring runs throughout for a clean, modern feel. The primary suite offers a 4pc ENSUITE with relaxing garden tub. Enjoy a fully FENCED yard with a sunny south-facing deck, patio, raspberry bushes & DOUBLE CONCRETE PARKING PAD--and you'll love having A/C for those hot summer nights. Major updates: roof/eaves (2025), furnace (2025), HWT (2024), washer/dryer (2025), flooring (2020), A/C (2018). (id:6769)

Living room 4.49 m X 4.3 m

Dining room 1.61 m X 3.72 m

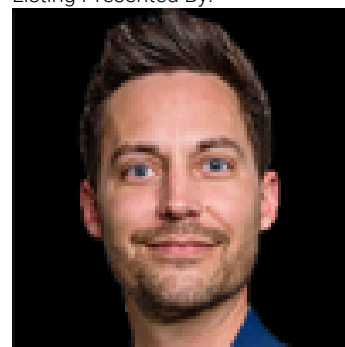
Kitchen 2.88 m X 6.34 m

Primary Bedroom 4.49 m X 3.58 m

Bedroom 2 2.72 m X 2.53 m

Bedroom 3 3.77 m X 2.52 m

Listing Presented By:



Originally Listed by:
Royal LePage Prestige Realty

<https://shannonbreen.ca/>

RE/MAX ELITE

RE/MAX Elite Sherwood Park

#116, 150 Chippewa Rd ,
Edmonton, Alberta,

Phone: 780-984-9399

Fax:

steveleddy@hotmail.com

The property information on this website is derived from the Canadian Real Estate Association's Data Distribution Facility (DDF®). DDF® references real estate listings held by various brokerage firms and franchisees. The accuracy of information is not guaranteed and should be independently verified. The trademarks REALTOR®, REALTORS® and the REALTOR® logo are controlled by The Canadian Real Estate Association (CREA) and identify real estate professionals who are members of CREA. The trademarks MLS®, Multiple Listing Service® and the associated logos are owned by CREA and identify the quality of services provided by real estate professionals who are members of CREA.