



Edmonton Alberta

\$145,000

Welcome to downtown living at its best. This bright and well-maintained Large Condo unit includes all utilities. Featuring laminate and tile flooring, newer appliances, newly painted, good-sized primary bedroom and a full 4-piece bathroom, this home offers comfort, style, and convenience. Inside this 9th floor unit, enjoy stunning skyline views and unbeatable walkability. The building delivers outstanding amenities: indoor pool, fully equipped exercise facility, huge outdoor patio, free laundry on every floor, secure underground parking, plus a social/party room for gatherings. Just steps to the River Valley and trails, restaurants, shopping, transit and everything downtown Edmonton has to offer. Ideal for first-time buyers, students, investors or anyone wanting affordable, low-maintenance living with exceptional value and walkability. (id:6769)

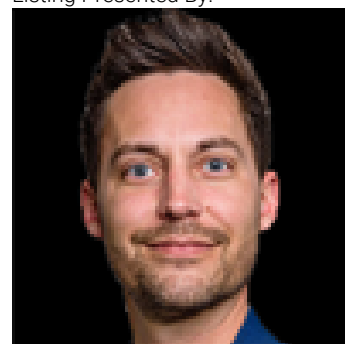
Living room Measurements not available

Dining room Measurements not available

Kitchen Measurements not available

Primary Bedroom Measurements not available

Listing Presented By:



Originally Listed by:
MaxWell Polaris

<https://www.maxwellrealty.ca/agent/colleen-gillies/>

RE/MAX ELITE

RE/MAX Elite Sherwood Park

#116, 150 Chippewa Rd ,
Edmonton, Alberta,

Phone: 780-984-9399

Fax:

steveleddy@hotmail.com

The property information on this website is derived from the Canadian Real Estate Association's Data Distribution Facility (DDF®). DDF® references real estate listings held by various brokerage firms and franchisees. The accuracy of information is not guaranteed and should be independently verified. The trademarks REALTOR®, REALTORS® and the REALTOR® logo are controlled by The Canadian Real Estate Association (CREA) and identify real estate professionals who are members of CREA. The trademarks MLS®, Multiple Listing Service® and the associated logos are owned by CREA and identify the quality of services provided by real estate professionals who are members of CREA.