

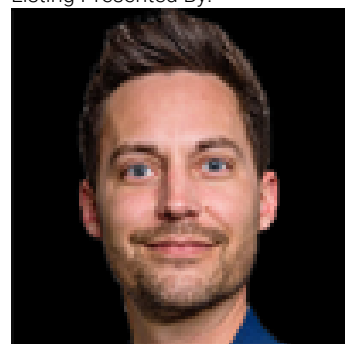


Edmonton Alberta

\$2,250

Beautiful newly built luxury 3-bedroom main-floor rental located in the Jasper Park neighbourhood. Built in 2025, this spacious home offers 1,655 sq ft of bright, open living space, rare for the area. Features luxury appliances, three large bedrooms, a modern layout, and a quiet, well-maintained, professionally managed property. Basement rented separately. Ideal for families or professionals. Pet friendly! (id:6769)

Listing Presented By:



Originally Listed by:
McLeod Realty & Management LTD



RE/MAX Elite Sherwood Park

#116, 150 Chippewa Rd ,
Edmonton, Alberta,

Phone: 780-984-9399

Fax:

steveleddy@hotmail.com

The property information on this website is derived from the Canadian Real Estate Association's Data Distribution Facility (DDF®). DDF® references real estate listings held by various brokerage firms and franchisees. The accuracy of information is not guaranteed and should be independently verified. The trademarks REALTOR®, REALTORS® and the REALTOR® logo are controlled by The Canadian Real Estate Association (CREA) and identify real estate professionals who are members of CREA. The trademarks MLS®, Multiple Listing Service® and the associated logos are owned by CREA and identify the quality of services provided by real estate professionals who are members of CREA.