



Edmonton Alberta

\$399,000

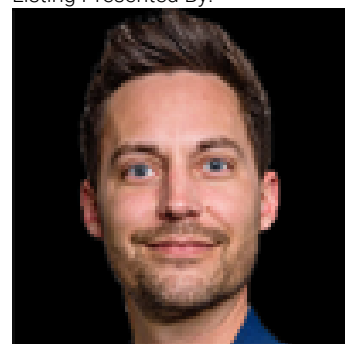
This upgraded four-level split, perfectly located in a quiet, family-friendly community close to all amenities. The open front entrance welcomes you into a bright, functional layout. Upstairs offers two generous bedrooms, including a primary with a private three-piece ensuite, plus a full four-piece bath. The lower level features a cozy living space with a gas fireplace and an additional bedroom—ideal for guests or a home office. The fully finished basement adds even more versatility with a spacious games room. Outside is where this home truly shines—enjoy a beautifully designed backyard oasis, perfect for relaxing or entertaining. A rear parking pad offers plenty of space to build your future double detached garage. A complete package of comfort, style, and outdoor living. (id:6769)

Bedroom 3 Measurements not available

Bedroom 2 Measurements not available

Primary Bedroom Measurements not available

Listing Presented By:



Originally Listed by:
NOW Real Estate Group



RE/MAX Elite Sherwood Park

#116, 150 Chippewa Rd ,
Edmonton, Alberta,

Phone: 780-984-9399

Fax:

steveleddy@hotmail.com

The property information on this website is derived from the Canadian Real Estate Association's Data Distribution Facility (DDF®). DDF® references real estate listings held by various brokerage firms and franchisees. The accuracy of information is not guaranteed and should be independently verified. The trademarks REALTOR®, REALTORS® and the REALTOR® logo are controlled by The Canadian Real Estate Association (CREA) and identify real estate professionals who are members of CREA. The trademarks MLS®, Multiple Listing Service® and the associated logos are owned by CREA and identify the quality of services provided by real estate professionals who are members of CREA.