

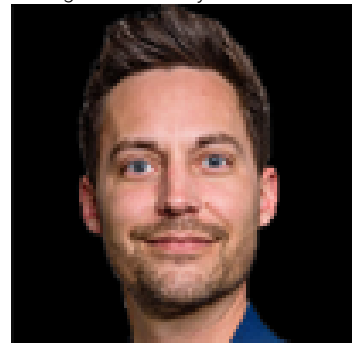


Edmonton Alberta

\$1,290,000

Versatile commercial unit with a quality build-out in place! Conveniently located in South Edmonton, the main floor is perfect for a cafe, professional services, retail, and much more. This property combines flexibility and visibility, being in a prime location near the major thoroughfares of 91 St. and 34 Ave., making it an excellent investment for an owner or an investor looking for a unique commercial space. (id:6769)

Listing Presented By:



Originally Listed by:
RE/MAX Excellence



RE/MAX Elite Sherwood Park

#116, 150 Chippewa Rd ,
Edmonton, Alberta,

Phone: 780-984-9399

Fax:

steveleddy@hotmail.com

The property information on this website is derived from the Canadian Real Estate Association's Data Distribution Facility (DDF®). DDF® references real estate listings held by various brokerage firms and franchisees. The accuracy of information is not guaranteed and should be independently verified. The trademarks REALTOR®, REALTORS® and the REALTOR® logo are controlled by The Canadian Real Estate Association (CREA) and identify real estate professionals who are members of CREA. The trademarks MLS®, Multiple Listing Service® and the associated logos are owned by CREA and identify the quality of services provided by real estate professionals who are members of CREA.