



Edmonton Alberta

\$1,088,888

Windsor Park homes at this scale don't come available often! This one sits on a corner lot w/ a west-facing yard that gets afternoon & evening sun, framed by mature landscaping, beautiful elms, and a fully fenced yard that feels like a private retreat. It's also a redevelopment opportunity: corner lot, generous footprint, premier Windsor Park location. Buy it, move right in, or build. Inside, the main floor flows the way a family home should: a proper living room, separate dining room, & kitchen, plus a sunken family room that adds warmth and separation w/out closing anything off. Main floor laundry & mudroom keep the day-to-day running smoothly. Upstairs, four large bedrooms give everyone their own space, along with a dedicated office & two full bathrooms. The basement is fully finished w/ a rec room & storage. High-efficiency furnace, newer hot water tank, central vacuum, & a double detached garage. Steps from the U of A, the river valley, & an easy drive to downtown. Opportunities like this don't wait! (id:6769)

Recreation room 8.13 m X 3.62 m

Storage 1.65 m X 1.41 m

Utility room 6.34 m X 3.58 m

Living room 6.01 m X 4.01 m

Dining room 3.89 m X 3.56 m

Kitchen 4.46 m X 4.31 m

Family room 6.12 m X 3.38 m

Primary Bedroom 5.07 m X 4.04 m

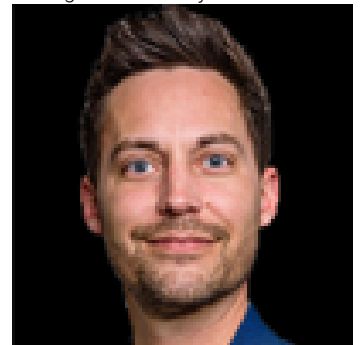
Bedroom 2 4.95 m X 3.39 m

Bedroom 3 5.07 m X 2.81 m

Bedroom 4 3.3 m X 2.83 m

Office 3.36 m X 2.55 m

Listing Presented By:



Originally Listed by:
Real Broker

<http://www.proctorteam.com/>

RE/MAX ELITE

RE/MAX Elite Sherwood Park

#116, 150 Chippewa Rd ,
Edmonton, Alberta,

Phone: 780-984-9399

Fax:

steveleddy@hotmail.com

The property information on this website is derived from the Canadian Real Estate Association's Data Distribution Facility (DDF®). DDF® references real estate listings held by various brokerage firms and franchisees. The accuracy of information is not guaranteed and should be independently verified. The trademarks REALTOR®, REALTORS® and the REALTOR® logo are controlled by The Canadian Real Estate Association (CREA) and identify real estate professionals who are members of CREA. The trademarks MLS®, Multiple Listing Service® and the associated logos are owned by CREA and identify the quality of services provided by real estate professionals who are members of CREA.