



## Edmonton Alberta

\$1,350,000

WELCOME TO HOLLINGSWORTH BEND, in the Prestigious community of Hodgson. This CUSTOM BUILT ACE-LANGE LUXURY HOME with TRIPLE ATTACHED HEATED GARAGE boasts 7 bedrooms, 7 bathrooms, and over 5,600 SQ.FT of living space. Notable features incl, NEW AGGREGATE DRIVEWAY(2025), Heated floors throughout the home, and a Beautiful Cedar Covered Patio. The Main floor chef-inspired kitchen equipped w/ HIGH-END APPLIANCES and walk-in Butler pantry w/ second cooking space. A spacious breakfast nook, formal dining room & elegant living room w/ Custom paintwork. Large family room w/ cozy fireplace, main floor bedroom w/ 3-piece ensuite & laundry rm complete the main level. The 2nd level provides a stunning primary retreat w/ 5-piece ensuite and walk-in closet. 3 more Bedrooms (all w/ ensuites incl. one Jack-n-Jill), a den/guest room, and an open office space complete the upper level. The fully finished basement offers a massive rec room, wet bar, two more bedrooms, 2 full bathrooms, plenty of storage, and utility space.

(id:6769)

Bedroom 6 4.72 m X 3.67 m

Additional bedroom 5.42 m X 3.69 m

Recreation room 4.09 m X 10.1 m

Living room 5.96 m X 3.97 m

Dining room 2.76 m X 3.97 m

Kitchen 4.92 m X 5.26 m

Family room 4.27 m X 5.76 m

Bedroom 5 4.3 m X 3.65 m

Breakfast 5.52 m X 3.16 m

Sunroom 4.31 m X 5.93 m

Den 2.52 m X 3.26 m

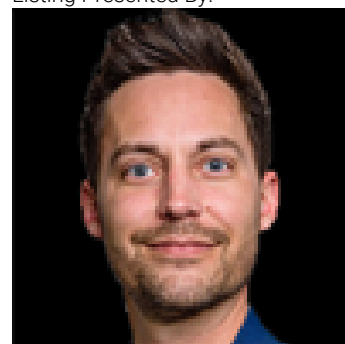
Primary Bedroom 5.43 m X 4.35 m

Bedroom 2 5.28 m X 3.87 m

Bedroom 3 4.69 m X 3.26 m

Bedroom 4 4.5 m X 4.43 m

Listing Presented By:



Originally Listed by:  
Real Broker



**RE/MAX Elite Sherwood Park**

#116, 150 Chippewa Rd ,  
Edmonton, Alberta,

Phone: 780-984-9399

Fax:

steveleddy@hotmail.com

The property information on this website is derived from the Canadian Real Estate Association's Data Distribution Facility (DDF®). DDF® references real estate listings held by various brokerage firms and franchisees. The accuracy of information is not guaranteed and should be independently verified. The trademarks REALTOR®, REALTORS® and the REALTOR® logo are controlled by The Canadian Real Estate Association (CREA) and identify real estate professionals who are members of CREA. The trademarks MLS®, Multiple Listing Service® and the associated logos are owned by CREA and identify the quality of services provided by real estate professionals who are members of CREA.