



Edmonton Alberta

\$908,800

Turn-key ready in Terwillegar Gardens with over \$300,000 in renovations and updates! A true family home w/ 6 bdrms & 4 full bthrms (including MAIN FLOOR BED/BTH). Grand entrance w/ soaring foyer & open-to-below living room. Renovated kitchen boasts floor-to-ceiling cabinetry & massive quartz. Open-to-below family rm w/ feature tiled fireplace. Upstairs find 3 bdrms & bonus rm. Primary bdrm is a true retreat! Basement finished w/ recreation/theatre space (projectors/screen incl), wetbar, 2 bdrms & full bthrm. Enjoy privacy w/ year-round trees lining the back of property. Plus a huge pie lot means extra side yard for kids to play or firepit/patio area. Extended composite deck was completed in 2022 & boasts a massive enclosed pergola w/ gas stove, BBQ & cooking station. Renos include: paint, LVP, furnace/AC (2023), filtration system, water softener, motorized/manual blinds, heated garage & more. Schools in immediate neighborhood, plus quick access to Henday or Whitemud w/ shops & restaurants nearby! (id:6769)

Bedroom 5 4.24 m X 3.17 m

Bedroom 6 3.41 m X 2.9 m

Recreation room 4.36 m X 3.9 m

Living room 4.02 m X 3.84 m

Dining room 3.72 m X 2.83 m

Kitchen 4.24 m X 4.04 m

Family room 3.8 m X 4 m

Bedroom 4 3.44 m X 3.87 m

Laundry room 2.41 m X 1.68 m

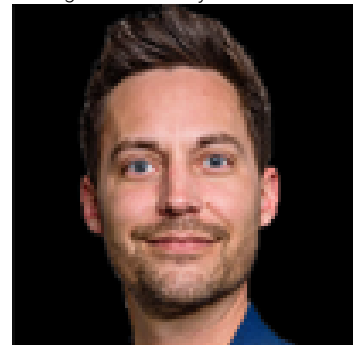
Primary Bedroom 4.85 m X 3.78 m

Bedroom 2 3.75 m X 3.08 m

Bedroom 3 3.96 m X 3.81 m

Bonus Room 3.29 m X 3.23 m

Listing Presented By:



Originally Listed by:
RE/MAX Elite

<http://www.alangee.com/>

RE/MAX ELITE

RE/MAX Elite Sherwood Park

#116, 150 Chippewa Rd ,
Edmonton, Alberta,

Phone: 780-984-9399

Fax:

steveleddy@hotmail.com

The property information on this website is derived from the Canadian Real Estate Association's Data Distribution Facility (DDF®). DDF® references real estate listings held by various brokerage firms and franchisees. The accuracy of information is not guaranteed and should be independently verified. The trademarks REALTOR®, REALTORS® and the REALTOR® logo are controlled by The Canadian Real Estate Association (CREA) and identify real estate professionals who are members of CREA. The trademarks MLS®, Multiple Listing Service® and the associated logos are owned by CREA and identify the quality of services provided by real estate professionals who are members of CREA.