



Edmonton Alberta

\$575,000

Stunning 6 BED 4 FULL BATH half duplex w/ LEGAL 2 bed 1 bath basement suite! Step into this grand open-concept home w/ upgrades galore incl: 9' ceilings on all 3 levels, 8' doors, LVP & ceramic tile flooring! The sunny living rm welcomes you with a cozy electric fireplace w/stone surround and attractive beam ceiling. A well-appointed island kitchen is the heart of this home, featuring high gloss cabinets to the ceiling, S/S appliances, gas stove, pantry storage and ample quartz countertops! The main level is completed by a sizeable dining nook, 3 piece bath, bedroom, and access to the deck & double detached garage. Upstairs offers a bonus loft, laundry rm, 2 additional well-sized bedrooms w/closet organizers and the primary suite oasis including: LED lit tray ceiling, WIC and luxurious 3 pce ensuite with body spray jets in the shower! Your mortgage helper awaits downstairs with a spacious 2 bed 1 bath layout, huge living space w/extra window and a full kitchen! Opportunity awaits, in the Orchards! (id:6769)

Second Kitchen 3.45 m X 2.76 m

Bedroom 5 3.19 m X 2.71 m

Bedroom 6 3.18 m X 2.72 m

Living room 5.09 m X 4.45 m

Dining room 3.18 m X 2.64 m

Kitchen 4.78 m X 3.63 m

Bedroom 4 3.14 m X 3.07 m

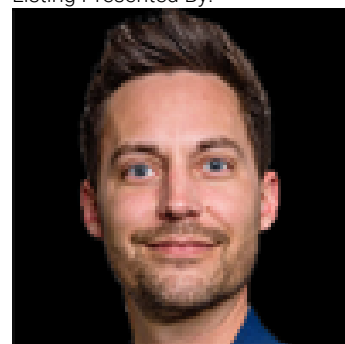
Primary Bedroom 4.31 m X 3.34 m

Bedroom 2 4.97 m X 3.13 m

Bedroom 3 4.19 m X 3.07 m

Bonus Room 3.28 m X 2.93 m

Listing Presented By:



Originally Listed by:
MaxWell Challenge Realty

RE/MAX ELITE

RE/MAX Elite Sherwood Park

#116, 150 Chippewa Rd ,
Edmonton, Alberta,

Phone: 780-984-9399

Fax:

steveleddy@hotmail.com