



Edmonton Alberta

\$699,900

Rare opportunity in Rosedale! This 2.5-storey home offers over 6 bedrooms and 4.5 bathrooms in one of Edmonton's most unique locations, surrounded by the River Valley trail system while being just minutes from Downtown, the UofA, and Old Strathcona. Enjoy views of the River Valley and Downtown skyline from the front deck, upper balcony, and loft. The main floor showcases hardwood floors, a chef's kitchen with butler's pantry, formal dining room, and bright living room with fireplace. Character details including stained glass accents add to the home's charm. The second level includes three bedrooms, one with a 4-pc ensuite. The third-floor primary retreat offers a walk-in closet, spacious 5-pc ensuite, and skylights that fill the space with natural light. The fully finished basement adds even more living space with two additional bedrooms, a full bathroom, family room, and ample storage. A rare chance to own a substantial home in Rosedale, one of Edmonton's most unique and historic neighbourhoods. (id:6769)

Bedroom 5 3.25 m X 4.13 m

Bedroom 6 3.59 m X 3.52 m

Recreation room 5.91 m X 3.92 m

Storage 3.26 m X 1.39 m

Living room 3.94 m X 5.32 m

Dining room 3.31 m X 3.94 m

Kitchen 4.4 m X 5.88 m

Laundry room 2.79 m X 2.73 m

Primary Bedroom 3.89 m X 3.94 m

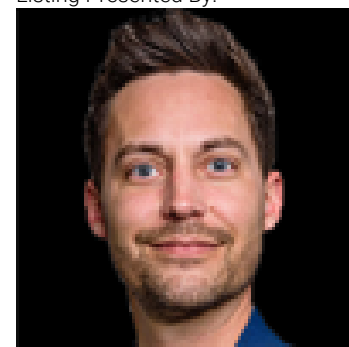
Bedroom 2 3.54 m X 3.02 m

Bedroom 3 3.54 m X 3.53 m

Bedroom 4 3.62 m X 4.15 m

Office 3.1 m X 2.88 m

Listing Presented By:



Originally Listed by:
Real Broker

<http://www.jessiemccracken.com/>

RE/MAX ELITE

RE/MAX Elite Sherwood Park

#116, 150 Chippewa Rd ,
Edmonton, Alberta,

Phone: 780-984-9399

Fax:

steveleddy@hotmail.com

The property information on this website is derived from the Canadian Real Estate Association's Data Distribution Facility (DDF®). DDF® references real estate listings held by various brokerage firms and franchisees. The accuracy of information is not guaranteed and should be independently verified. The trademarks REALTOR®, REALTORS® and the REALTOR® logo are controlled by The Canadian Real Estate Association (CREA) and identify real estate professionals who are members of CREA. The trademarks MLS®, Multiple Listing Service® and the associated logos are owned by CREA and identify the quality of services provided by real estate professionals who are members of CREA.