



Edmonton Alberta

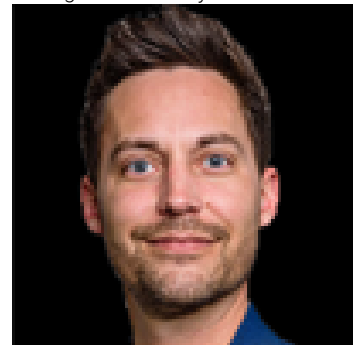
\$2,490,000

Panoramic views over the river valley & onto downtown, 1 of 9 homes in this exclusive location! 3,470 sqft, 4 beds, 6 baths, an elevator, & a commercial wall of windows up the front of the home! The kitchen features top-tier Redl cabinets, painted glass backsplash, JennAir Professional appliances, quartz, windows that open to main floor patio, and a bar beside the dining area. Swarovski lights lead up the Artistic Stairs with 13mm glass & stainless rails. 3 beds and laundry on 2nd level. A primary with wall of windows looking onto downtown, wet bar, and California Closets walk-in. An en-suite with spa steam shower, massive shower head (\$25K), body sprays, surround sound, and stone resin stand alone tub. The penthouse bar has 2 rooftop patios, gas lines, hot & cold taps, frameless postless glass, and is spec'd for hot tub! A double attached garage with 20' wide door, 4th bed & soundproof living room in basement. Over \$250K of audio & home automation! Some pictures virtually staged. (id:6769)

Family room 22'9 x 16'
 Bedroom 4 8'3 x 11'7
 Living room 21'6 x 24'1
 Dining room 15'9 x 11'3
 Kitchen 17'10 x 12'9

Den 7'5 x 6'0
 Primary Bedroom 21' x 24'1
 Bedroom 2 14'2 x 12'10
 Bedroom 3 19' x 11'9
 Loft 21'11 x 12'10

Listing Presented By:



Originally Listed by:
 REMAX River City

<http://www.marketdirection.ca/>



RE/MAX Elite Sherwood Park

#116, 150 Chippewa Rd,
 Edmonton, Alberta,

Phone: 780-984-9399

Fax:

steveleddy@hotmail.com

The property information on this website is derived from the Canadian Real Estate Association's Data Distribution Facility (DDF®). DDF® references real estate listings held by various brokerage firms and franchisees. The accuracy of information is not guaranteed and should be independently verified. The trademarks REALTOR®, REALTORS® and the REALTOR® logo are controlled by The Canadian Real Estate Association (CREA) and identify real estate professionals who are members of CREA. The trademarks MLS®, Multiple Listing Service® and the associated logos are owned by CREA and identify the quality of services provided by real estate professionals who are members of CREA.