

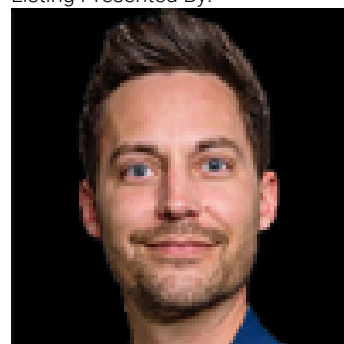


Edmonton Alberta

\$1,200,000

4,000 sq.ft. freestanding building with yard available for sale at 9516 - 62 Avenue in Edmonton. The building is currently demised into two 2,000 sq.ft. bays and includes 800 sq.ft. of office space, two 10' x 12' overhead doors, 14' ceiling height, and floor drains. Situated on a 9,200 sq.ft. site, the property has 3-phase, 220V power (TBC), unit heaters in the warehouse, and a forced air furnace in the office. Zoned BE (Business Employment) with access to Argyll Road, Gateway Boulevard, Calgary Trail, and Whitemud Drive. (id:6769)

Listing Presented By:



Originally Listed by:
NAI Commercial Real Estate Inc



RE/MAX Elite Sherwood Park

#116, 150 Chippewa Rd ,
Edmonton, Alberta,

Phone: 780-984-9399

Fax:

steveleddy@hotmail.com

The property information on this website is derived from the Canadian Real Estate Association's Data Distribution Facility (DDF®). DDF® references real estate listings held by various brokerage firms and franchisees. The accuracy of information is not guaranteed and should be independently verified. The trademarks REALTOR®, REALTORS® and the REALTOR® logo are controlled by The Canadian Real Estate Association (CREA) and identify real estate professionals who are members of CREA. The trademarks MLS®, Multiple Listing Service® and the associated logos are owned by CREA and identify the quality of services provided by real estate professionals who are members of CREA.