



## Edmonton Alberta

\$324,900

Fantastic adult bungalow (55+) in a prime location backing onto a beautiful park with a private, south-facing yard and large covered deck complete with privacy wall. This bright and airy home features large windows, spacious bedrooms, and two full bathrooms, including a primary suite with walk-in closet and ensuite. The kitchen offers light oak cabinetry, a matching buffet in the dining area, pantry, and plenty of storage. Main floor laundry adds convenience, and the fully finished basement includes a large great room and a generous hobby room. Recent updates include a new furnace and hot water tank. This home is in excellent condition and has been very well maintained. Low-maintenance and move-in ready. Quiet, peaceful setting yet close to all amenities, shopping, walking paths, transit, and more. A must-see for those seeking quality, comfort, and a park-like environment in a well-cared-for 55+ community. (id:6769)

Great room 4.92 m X 6.16 m

Other 5.56 m X 7.16 m

Living room 3.61 m X 4.94 m

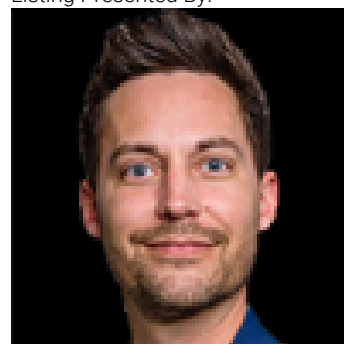
Dining room 2.75 m X 2.5 m

Kitchen 2.6 m X 4.82 m

Primary Bedroom 4.21 m X 3.64 m

Bedroom 2 2.78 3.32

Listing Presented By:



Originally Listed by:  
RE/MAX Edge Realty



**RE/MAX Elite Sherwood Park**

#116, 150 Chippewa Rd ,  
Edmonton, Alberta,

Phone: 780-984-9399

Fax:

steveleddy@hotmail.com