



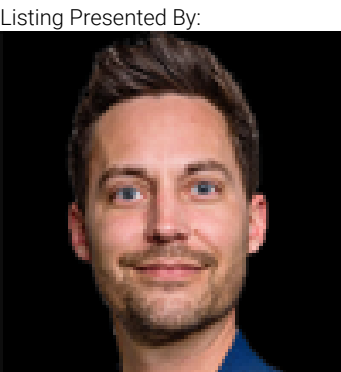
# Edmonton Alberta

\$2,250,000

Brand New FOURPLEX with 4 Legal Basement Suites - Prime Investment Opportunity! Welcome to this cash-flowing property featuring a total of 16 bedrooms and 12 bathrooms, welcomed by a modern open concept, the main floor features chefs kitchen with SS appliances, living and dining space; including four 1 bed/1 bath LEGAL basement suites with separate entrances and full kitchens! Designed for high rental income or extended family living. Ideally located just minutes to Downtown Edmonton, West Edmonton Mall, and the River Valley, with schools, shopping, and public transit all within walking distance. Each unit spans approx-1,162 sq ft above grade, plus 578 sq ft in the basement. The fourplex next door is also available--purchase one or buy both together for an exceptional investment opportunity! Still under construction, the photos shown are from a similar fourplex recently built by the same builder--final finishes for this unit will be comparable in style & quality! (id:6769)

Bedroom 4 Measurements not available  
 Second Kitchen Measurements not available  
 Living room Measurements not available  
 Dining room Measurements not available

Kitchen Measurements not available  
 Primary Bedroom Measurements not available  
 Bedroom 2 Measurements not available  
 Bedroom 3 Measurements not available



Listing Presented By:

Originally Listed by:  
 RE/MAX Excellence



**RE/MAX Elite Sherwood Park**  
 #116, 150 Chippewa Rd ,  
 Edmonton, Alberta,  
 Phone: 780-984-9399  
 Fax:  
 steveleddy@hotmail.com