

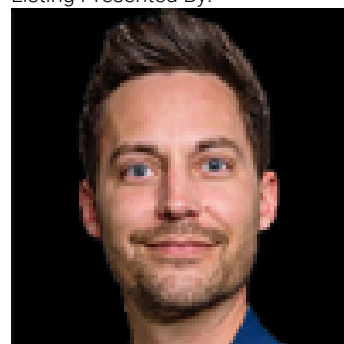


Rural Leduc County Alberta

\$155,000

Excellent opportunity to build at Pigeon Lake! This 60' x 180' second-row lot in the Summer Village of Golden Days offers lake views and lake access directly across the road, providing the best lake access possible without being lakefront. The property is serviced with a drilled well already in place, and sewer, power, and natural gas at the property line. The lot is partially fenced, with an approach from the side and rear, and has been recently surveyed with all corners marked. Ideal for a seasonal retreat or year-round lake home. (id:6769)

Listing Presented By:



Originally Listed by:
Initia Real Estate

<https://benbowrealestategroup.ca/>



RE/MAX Elite Sherwood Park

#116, 150 Chippewa Rd ,
Edmonton, Alberta,

Phone: 780-984-9399

Fax:

steveleddy@hotmail.com

The property information on this website is derived from the Canadian Real Estate Association's Data Distribution Facility (DDF®). DDF® references real estate listings held by various brokerage firms and franchisees. The accuracy of information is not guaranteed and should be independently verified. The trademarks REALTOR®, REALTORS® and the REALTOR® logo are controlled by The Canadian Real Estate Association (CREA) and identify real estate professionals who are members of CREA. The trademarks MLS®, Multiple Listing Service® and the associated logos are owned by CREA and identify the quality of services provided by real estate professionals who are members of CREA.