

Edmonton Alberta

\$122,900

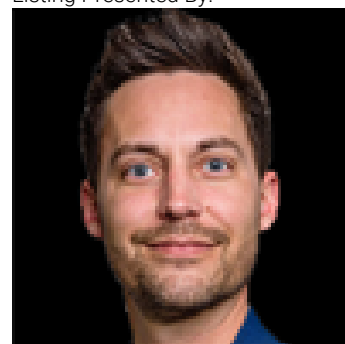
Move-in ready, budget-friendly, and built for hosting! This GROUND FLOOR one-bedroom is anchored by a huge private SE-facing patio that opens onto the main street rather than the back alley picture summer dinners outside in the warm afternoon sun, the BBQ going, friends pulling up chairs. Inside, the unit feels open and bright, with brand-new luxury vinyl plank flooring, fresh paint, and new baseboards top to bottom. The location is unbeatable: smack in the middle of Oliver (Wihkwentowin), where you've got incredible restaurants, cafes, and shops right outside your door and a Lime scooter ride away from the river valley and downtown whenever the mood strikes. An assigned storage locker frees up extra space. One exterior parking stall is included, with underground parking also available in the building. Condo fees cover everything but power, so your monthly bills stay simple and predictable. Quick Possession Available! (id:6769)

Living room 6.23 x 3.70

Primary Bedroom 3.04 x 2.51

Kitchen 2.73 x 2.52

Listing Presented By:



Originally Listed by:
Real Broker

<http://yegforme.ca/>

RE/MAX ELITE

RE/MAX Elite Sherwood Park

#116, 150 Chippewa Rd ,
Edmonton, Alberta,

Phone: 780-984-9399

Fax:

steveleddy@hotmail.com

The property information on this website is derived from the Canadian Real Estate Association's Data Distribution Facility (DDF®). DDF® references real estate listings held by various brokerage firms and franchisees. The accuracy of information is not guaranteed and should be independently verified. The trademarks REALTOR®, REALTORS® and the REALTOR® logo are controlled by The Canadian Real Estate Association (CREA) and identify real estate professionals who are members of CREA. The trademarks MLS®, Multiple Listing Service® and the associated logos are owned by CREA and identify the quality of services provided by real estate professionals who are members of CREA.