

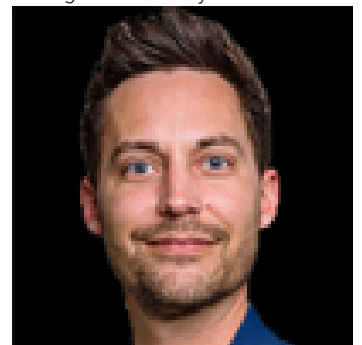


Edmonton Alberta

\$403,265

o Nerval development with immediate occupancy Located in Edmonton's west end on the main artery of 118th Avenue with immediate access to 170th Street, 178th Street, Yellowhead Freeway, and Anthony Henday Freeway Two storey office/retail building with elevator and second floor common area washrooms Unit size range from 1,120 sq.ft. and up to 9,548 sq.ft. Building is sprinklered Tilt-up concrete and steel construction with high level of common area improvements and aesthetically pleasing exterior Includes one HVAC per unit Shaw fibre available Pylon signage available (id:6769)

Listing Presented By:



Originally Listed by:
NAI Commercial Real Estate Inc

RE/MAX ELITE

RE/MAX Elite Sherwood Park

#116, 150 Chippewa Rd ,
Edmonton, Alberta,

Phone: 780-984-9399

Fax:

steveleddy@hotmail.com

The property information on this website is derived from the Canadian Real Estate Association's Data Distribution Facility (DDF®). DDF® references real estate listings held by various brokerage firms and franchisees. The accuracy of information is not guaranteed and should be independently verified. The trademarks REALTOR®, REALTORS® and the REALTOR® logo are controlled by The Canadian Real Estate Association (CREA) and identify real estate professionals who are members of CREA. The trademarks MLS®, Multiple Listing Service® and the associated logos are owned by CREA and identify the quality of services provided by real estate professionals who are members of CREA.