



Edmonton Alberta

\$899,000

Penthouse. Sacrifice, crazy cheap. There is no comparable value on the market today. An inspired space featuring timeless design elements not found in any other property in our city. Fully furnished. From the sheer grandeur of the space itself (3000 sq ft measured), to the custom mill-work, stone work, lighting and fixtures, it is truly one of a kind. Design features and artisan elements create a home that is truly awesome. Features include peaked 22' ceilings in most rooms. All custom built woodwork (doors, kitchen, trims, 1000 book library shelving and details). Large office space could be converted to a 3rd bedroom. Other features include home theater, 3 fireplaces, audio wiring and 2 huge balconies. If you love the cold stark plain white walls in the newer buildings at \$500-700 PSF away you go or you can pay half as much for twice the space. Unobstructed river valley views. This is a must see in our town. All this at \$300 Per square foot (id:6769)

Living room 20 m X 24 m

Dining room 15 m X 10.5 m

Kitchen 16.5 m X 14 m

Primary Bedroom 23.5 m X 18 m

Bedroom 2 16.5 m X 14 m

Laundry room 10 m X 11 m

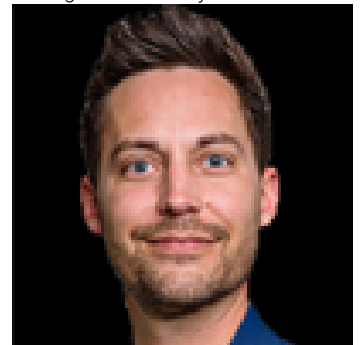
Laundry room 10 m X 11 m

Office 13.5 m X 11 m

Media 17.5 m X 12 m

Library 21 m X 6.5 m

Listing Presented By:



Originally Listed by:
MaxWell Polaris

<http://www.trevordunn.com/>

RE/MAX ELITE

RE/MAX Elite Sherwood Park

#116, 150 Chippewa Rd ,
Edmonton, Alberta,

Phone: 780-984-9399

Fax:

steveleddy@hotmail.com

The property information on this website is derived from the Canadian Real Estate Association's Data Distribution Facility (DDF®). DDF® references real estate listings held by various brokerage firms and franchisees. The accuracy of information is not guaranteed and should be independently verified. The trademarks REALTOR®, REALTORS® and the REALTOR® logo are controlled by The Canadian Real Estate Association (CREA) and identify real estate professionals who are members of CREA. The trademarks MLS®, Multiple Listing Service® and the associated logos are owned by CREA and identify the quality of services provided by real estate professionals who are members of CREA.