

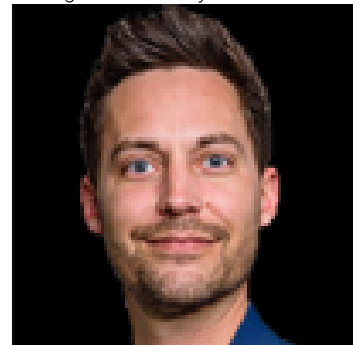


## Rural Lac Ste Anne County Alberta

\$94,900

Unique 40-acre parcel in Lac Ste. Anne County consisting of a portion of the SE quarter not covered by the waters of Oldman Lake. This land surrounds the natural lakebed and offers a peaceful, private setting with mature trees, open areas, and abundant wildlife. Oldman Lake is a natural water body that enhances the property's scenic value and creates a quiet, undeveloped backdrop ideal for recreation and nature enjoyment. An excellent opportunity for a rural retreat or future development subject to county approval. Conveniently located an hour from Edmonton with access via mostly paved roads and close to Highway 43. Buyers to verify boundaries, access, and permitted uses through their own due diligence. 39.78-acre parcel across the road (56413) & 39.78 adjacent treed parcel on south side of (56413) are also available for purchase, offering a rare opportunity to expand your land holdings and own all three properties. (id:6769)

Listing Presented By:



Originally Listed by:  
RE/MAX Real Estate

<http://www.thesoldsisters.ca/>

**RE/MAX ELITE**

**RE/MAX Elite Sherwood Park**

#116, 150 Chippewa Rd ,  
Edmonton, Alberta,

Phone: 780-984-9399

Fax:

steveleddy@hotmail.com

The property information on this website is derived from the Canadian Real Estate Association's Data Distribution Facility (DDF®). DDF® references real estate listings held by various brokerage firms and franchisees. The accuracy of information is not guaranteed and should be independently verified. The trademarks REALTOR®, REALTORS® and the REALTOR® logo are controlled by The Canadian Real Estate Association (CREA) and identify real estate professionals who are members of CREA. The trademarks MLS®, Multiple Listing Service® and the associated logos are owned by CREA and identify the quality of services provided by real estate professionals who are members of CREA.