

**NO PHOTO AVAILABLE**

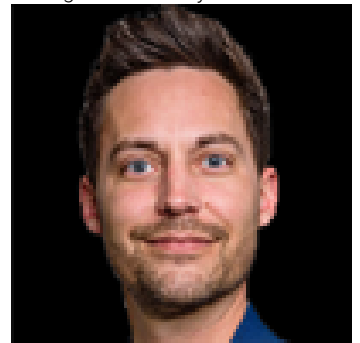
**For more photos &  
information, please  
contact me.**

## Edmonton Alberta

\$12

o Located at Roper Road, with access to 75th Street, 50th Street and Whitemud Driveo Close proximity to the Davies LRT Station, part of the Valley Line extensiono Building signage available above the main entranceo 128 parking stalls on siteo Features large windows (id:6769)

Listing Presented By:



Originally Listed by:  
NAI Commercial Real Estate Inc

**RE/MAX ELITE**

**RE/MAX Elite Sherwood Park**

#116, 150 Chippewa Rd ,  
Edmonton, Alberta,

Phone: 780-984-9399

Fax:

steveleddy@hotmail.com

The property information on this website is derived from the Canadian Real Estate Association's Data Distribution Facility (DDF®). DDF® references real estate listings held by various brokerage firms and franchisees. The accuracy of information is not guaranteed and should be independently verified. The trademarks REALTOR®, REALTORS® and the REALTOR® logo are controlled by The Canadian Real Estate Association (CREA) and identify real estate professionals who are members of CREA. The trademarks MLS®, Multiple Listing Service® and the associated logos are owned by CREA and identify the quality of services provided by real estate professionals who are members of CREA.