



117 Sandulac Street Fort McMurray Alberta

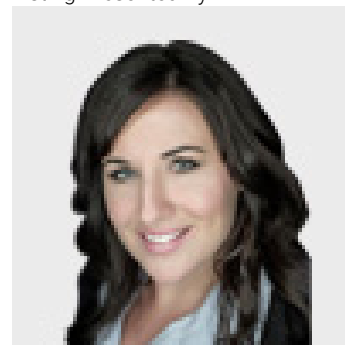
\$399,900

Welcome to 117 Sandulac Street nestled on a vibrant and family-friendly street, close to bus stops and Syncrude Athletic Park which offers ball diamonds, a skate park, cricket pitches and a popular playground and water park. The main floor offers a front bedroom just off the entry way which is perfect for a home based business office and the back of the home is a bright and inviting open-concept layout with a cozy gas fireplace in the living room, and an eat in kitchen with island, newer countertops and black stainless steel appliances. Patio doors off the dining nook lead to the back deck and fenced backyard. Also on the main floor is bedroom #3, a full main bathroom and the primary bedroom with it's own 4PC ensuite bathroom. The basement, recently developed, presents even more possibilities. It offers 2 more bedrooms, a 4-piece bathroom, and an expansive living room complete with a gas fireplace. Out front you will find the double attached garage and a 2-car driveway for additional parking. This home is within 1 block of 2 parks and playgrounds making it the perfect place to raise a young family. Don't miss this thrilling opportunity to make 117 Sandulac Street your forever home. Embrace the excitement and schedule your showing today! Sold as is where is (id:6769)

4pc Bathroom Measurements not available
 Bedroom 11.08 Ft x 13.67 Ft
 Bedroom 9.00 Ft x 11.50 Ft
 Recreational, Games room 21.75 Ft x 19.83 Ft
 Storage 8.17 Ft x 13.75 Ft
 4pc Bathroom Measurements not available
 4pc Bathroom Measurements not available

Bedroom 9.50 Ft x 9.08 Ft
 Bedroom 9.00 Ft x 9.08 Ft
 Dining room 9.33 Ft x 9.00 Ft
 Kitchen 9.25 Ft x 8.33 Ft
 Primary Bedroom 10.67 Ft x 13.00 Ft
 Laundry room 8.42 Ft x 5.58 Ft
 Living room 12.08 Ft x 16.83 Ft

Listing Presented By:



Originally Listed by:
 RE/MAX FORT MCMURRAY

<http://www.jadenesellshomes.com>

RE/MAX

RE/MAX Fort McMurray

9919 Biggs Avenue, Fort McMurray, AB,

Phone: 780-880-7173
 jadenek@remax.net