



172 Siltstone Place Fort McMurray Alberta

\$519,900

SUPERIOR AND SPLENDID IN STONECREEK! A FULLY DEVELOPED HOME FEATURING AN OVERSIZED DETACHED DOUBLE HEATED DRIVE-THROUGH GARAGE. Turnkey and move-in ready on this 2017 build offering a great layout and all those most wanted finishings, LUXURY VINYL PLANK FLOORS, QUARTZ COUNTER TOPS, 9 FT CEILINGS, POT LIGHTING, and CENTRAL A/C. The main level features an open-concept living area with a great room with a built-in fireplace, offers a floor-to-ceiling wood feature wall and mantle. The great room opens to the dining nook and kitchen. The kitchen offers loads of cabinets, stainless steel appliances, breakfast bar, tile backsplash and tile floors. The main level has a 2-pc powder room, laundry room and rear mudroom with direct access to your yard and garage. The upper level has 3 bedrooms and 2 bathrooms. The Primary bedroom is complete with a WALK-IN CLOSET, and FULL ENSUITE. The lower level is fully finished with a family room with a sit-up WET BAR with quartz countertops. In addition, there is a 4th bedroom and full bathroom. The interior of this home is tastefully decorated and offers the most wanted paint colors. On the exterior you will fall in love with the curb appeal of this home which includes a front covered veranda, large rear deck, a fully fenced and landscaped yard and that amazing man cave the detached drive-through heated garage. This home offers quick access to Stoney Creek Plaza, transit and site bus stops, parks Outdoor rinks and more. Call today for your personal tour. (id:6769)

3pc Bathroom 7.00 Ft x 5.92 Ft

Bedroom 8.92 Ft x 11.75 Ft

2pc Bathroom 7.25 Ft x 4.83 Ft

3pc Bathroom 6.17 Ft x 5.83 Ft

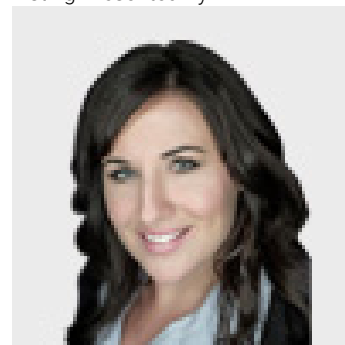
4pc Bathroom 9.50 Ft x 4.92 Ft

Bedroom 9.17 Ft x 8.83 Ft

Bedroom 9.00 Ft x 9.08 Ft

Primary Bedroom 12.58 Ft x 15.83 Ft

Listing Presented By:



Originally Listed by:
COLDWELL BANKER UNITED

<https://www.lisasellsymm.com/>

RE/MAX

RE/MAX Fort McMurray

9919 Biggs Avenue , Fort
McMurray, AB,

Phone: 780-880-7173
jadenek@remax.net