



# 183 Hopegood Drive Anzac Alberta

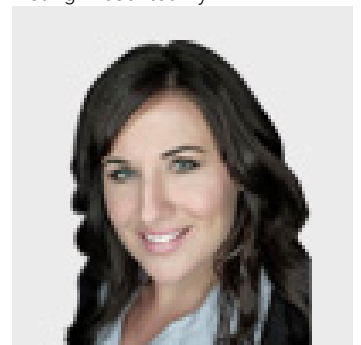
\$255,000

Welcome to 183 Hopegood Drive, just walking distance to the shores of Gregoire Lake. This fully developed home with a DOUBLE DETACHED GARAGE is situated on OVER AN ACRE of land surrounded by tons of mature trees. Pull into your extra long driveway with loads of parking/RV parking that leads to your 25 x 23 double detached garage. As you enter the home you are greeted by a spacious front living space with a large bay window creating tons of natural lighting. Just off your front living space you have your primary bedroom offering a WALK IN CLOSET + a beautiful FULL ENSUITE with a corner jetted tub, obscure glass windows allowing natural light while remaining privacy, and a stand-up shower. On the opposite side of the home you have 2 more bedrooms both featuring WALK IN CLOSETS as well as an additional full bathroom. On the back of the home there is a great family room and a large kitchen with windows overlooking your stunning backyard views and a corner pantry. Across from the kitchen is an arched entry way opening up to your formal dining room. Leading to your back door is the laundry space with a washer/dryer and lots of additional laundry storage space. The backyard is truly an oasis with its large mature trees, two tiered deck, and a hot tub to enjoy + take in the views! Located in Anzac, just minutes away from the Anzac Recreation Centre, Gregoire Lake, grocery stores, restaurants, schools + more! Call today for your personal tour! (id:6769)

4pc Bathroom 8.75 Ft x 5.00 Ft  
4pc Bathroom 8.25 Ft x 10.92 Ft  
Bedroom 13.00 Ft x 9.92 Ft  
Bedroom 13.08 Ft x 9.67 Ft  
Dining room 13.17 Ft x 10.25 Ft

Family room 13.08 Ft x 17.83 Ft  
Kitchen 13.00 Ft x 15.00 Ft  
Laundry room 9.50 Ft x 6.17 Ft  
Living room 14.08 Ft x 19.00 Ft  
Primary Bedroom 13.08 Ft x 11.92 Ft

Listing Presented By:



Originally Listed by:  
COLDWELL BANKER UNITED



**RE/MAX Fort McMurray**

9919 Biggs Avenue , Fort McMurray, AB,

Phone: 780-880-7173  
jadenek@remax.net