



193 O'coffey Crescent Fort McMurray Alberta

\$299,900

IMMEDIATE POSSESSION! END UNIT! This townhouse is in an amazing location backing onto the Syncrude Athletic Park! This townhouse comes with a double attached heated garage and great parking. Located in Timberlea and close to all amenities, this 3-bedroom and 2.5-bathroom townhouse boasts quality workmanship throughout. It features hardwood and tile flooring, stainless steel appliances, central air, and a central vacuum with attachments. The main floor features a living room with an extra large window for natural light and a gas fireplace, a half bathroom, the kitchen with custom cabinetry, a large eat-at island and lots of countertop space, plus a dining area with large patio doors that leads to the tranquil and quiet secluded back deck. Upstairs, you'll find a large master bedroom with a walk-in closet in the ensuite with a tiled shower plus a heated tiled flooring throughout the bathroom floor. There are 2 additional generous-sized bedrooms, a second full bath also with heated flooring plus a laundry area with front load washer and dryer. The lower level is a blank canvas and awaits your ideas. The location is super close to recreation facilities, park space, walking trails, and bus routes. Whether you're a first-time buyer, a couple, or an investor, this townhouse is perfect for you. Give us a call to schedule a viewing! (id:6769)

3pc Bathroom .00 M x .00 M

4pc Bathroom 2.90 M x 2.82 M

Primary Bedroom 4.04 M x 4.22 M

Bedroom 3.15 M x 3.94 M

Bedroom 3.83 M x 3.45 M

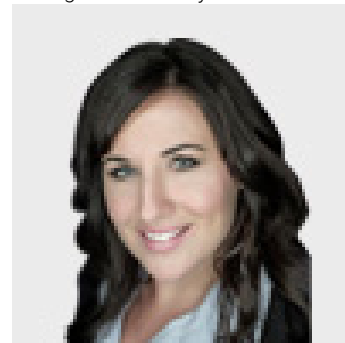
Other 2.95 M x 1.50 M

Kitchen 3.30 M x 4.19 M

Living room 4.29 M x 4.17 M

2pc Bathroom 2.44 M x .91 M

Listing Presented By:



Originally Listed by:
ROYAL LEPAGE BENCHMARK

<http://www.cindyscantland.com/>

RE/MAX

RE/MAX Fort McMurray

9919 Biggs Avenue , Fort
McMurray, AB,

Phone: 780-880-7173
jadenek@remax.net