



## 278 Pacific Crescent Fort McMurray Alberta

\$589,000

One-of-a-Kind Timberlea Gem with Massive Detached Garage! This exceptional home is situated on a spacious 7,500 sqft pie-shaped corner lot, offering 1,700 sqft of living space. Boasting one of the largest detached garages in Timberlea--30x30 with 13-foot vaulted ceilings, oversized 10-foot garage doors, and an abundance of natural light through multiple windows--this garage is a dream for anyone with large vehicles, even big enough to fit a dump truck! Heated and meticulously clean, it's perfect for year-round use. The property also features RV parking and ample space for multiple vehicles. Inside, you'll find a bright and open layout with a large dining area, perfect for entertaining. Upstairs are 3 spacious bedrooms, including a master with a full ensuite and walk-in closet. The additional two bedrooms share a convenient Jack-and-Jill bathroom. The basement features a fully developed, non-legal 2-bedroom suite with its own private side entrance, providing extra space for extended family or rental income potential. This home is truly a rare find--don't miss your chance to own it! call for your personal tour (id:6769)

4pc Bathroom 9.58 Ft x 4.92 Ft

Primary Bedroom 12.58 Ft x 15.50 Ft

Bedroom 10.50 Ft x 13.17 Ft

Bedroom 9.67 Ft x 12.08 Ft

4pc Bathroom 9.58 Ft x 4.92 Ft

4pc Bathroom 7.92 Ft x 5.00 Ft

Bedroom 10.17 Ft x 10.33 Ft

Bedroom 9.50 Ft x 13.58 Ft

Kitchen 8.42 Ft x 14.50 Ft

Living room 11.00 Ft x 16.50 Ft

Furnace 7.58 Ft x 7.17 Ft

2pc Bathroom 6.00 Ft x 5.67 Ft

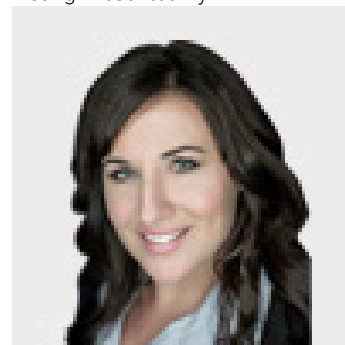
Dining room 9.25 Ft x 8.58 Ft

Family room 12.00 Ft x 11.25 Ft

Kitchen 8.58 Ft x 12.42 Ft

Living room 13.50 Ft x 20.08 Ft

Listing Presented By:



Originally Listed by:  
EXP REALTY

**RE/MAX**

**RE/MAX Fort McMurray**

9919 Biggs Avenue, Fort  
McMurray, AB,

Phone: 780-880-7173  
jadenek@remax.net